

# TACCHELLA 1018 UA

**Category** Grinding Machine

**Made** TACCHELLA

**Type** Cylindrical

**Model** 1018 UA

**Capacity** 360 X 1000 mm



## Technical specifications

<p><b>WORKING CAPACITY</b></p>	<p><b>TABLE</b></p>	<p><b>WHEELHEAD</b></p>
<p><b>Centres distance</b> 1000 mm  <b>Centres height</b> 180 mm  <b>Max grinding diameter</b> 360 mm  <b>Notes</b> MARPOSS</p>	<p><b>Max workpiece weight</b> 250 Kg  <b>Tilt</b> 0-7°</p>	<p><b>External spindle power</b> 5,5 Kw  <b>External spindle speed</b> 1450 Rpm</p>
<p><b>LEFT WHEEL</b></p>	<p><b>TAILSTOCK</b></p>	<p><b>WORKPIECE HEAD</b></p>
<p><b>Wheel band thickness</b> 100 mm  <b>Max wheel diameter</b> 450 mm  <b>Hole diameter</b> 127 mm</p>	<p><b>Drive</b> IDRAULICO E MANUALE</p>	<p><b>Speed regulation</b> VARIABILE</p>
<p><b>FEEDS</b></p>	<p><b>Tooling included</b> COPIATORE MOLA  <b>Closed steadies</b> SI  <b>Diametral probe</b> Yes  <b>Maintenance &amp; Use books</b> Yes  <b>Electrical drawings</b> Yes  <b>Housing</b> FRONTALE CON MICRO BLOCCAGGIO  <b>Availability</b> PRONTA  <b>Available in stock</b> SI  <b>Available under power</b> SI  <b>Relevant updates made on the machine</b>            MANUTENZIONE ORDINARIA CAMBIO CUSCINETTI</p>	
<p><b>Automatic Vertical</b> SI CON PLONGE            AUTOMATICO mm/min  <b>Cross</b> SI-PLONGE AUTOMATICO mm/min</p>		

### Gamba Macchine Srl

### Contacts

### Where we are

V.A.T. IT00639540988

+39 030 831096

### Headquarter and Warehouse 1

### Warehouse 2

C.F./R.I. 01581570171

+39 030 8913312

Via Artigiani, 32 - 25063

Via Caduti del lavoro 41, 25030

REA 248813 BS

offerte@gambamacchine.it

Gardone V.T. Brescia - Italia

Coccaglio Brescia - Italia

C.S. 802.165,00 €



**Gamba Macchine Srl**

**Contacts**

**Where we are**

**V.A.T.** IT00639540988

+39 030 831096

**Headquarter and Warehouse 1**

**Warehouse 2**

**C.F./R.I.** 01581570171

+39 030 8913312

Via Artigiani, 32 - 25063

Via Caduti del lavoro 41, 25030

**REA** 248813 BS

offerte@gambamacchine.it

Gardone V.T. Brescia - Italia

Coccaglio Brescia - Italia

**C.S.** 802.165,00 €





**Gamba Macchine Srl**

**Contacts**

**Where we are**

V.A.T. IT00639540988

+39 030 831096

**Headquarter and Warehouse 1**

**Warehouse 2**

C.F./R.I. 01581570171

+39 030 8913312

Via Artigiani, 32 - 25063

Via Caduti del lavoro 41, 25030

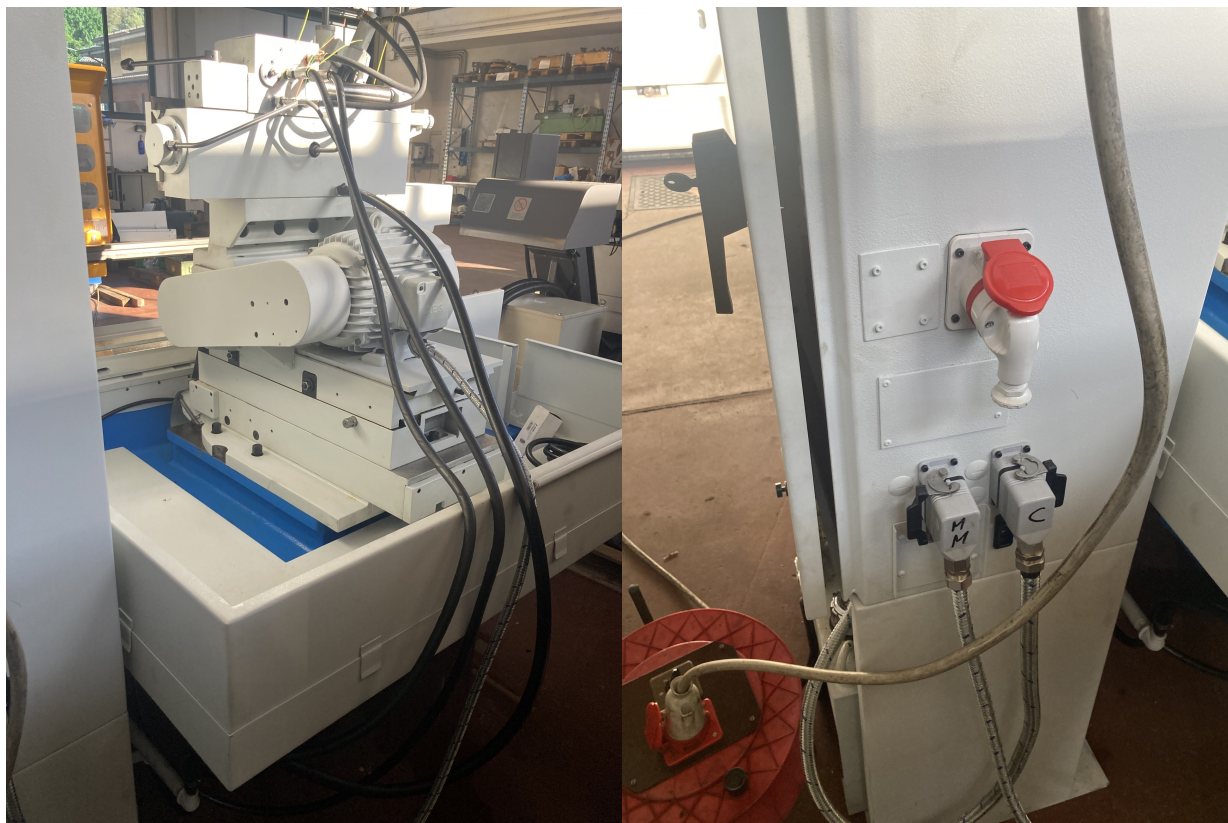
REA 248813 BS

offerte@gambamacchine.it

Gardone V.T. Brescia - Italia

Coccaglio Brescia - Italia

C.S. 802.165,00 €



**Gamba Macchine Srl**

**V.A.T.** IT00639540988

**C.F./R.I.** 01581570171

**REA** 248813 BS

**C.S.** 802.165,00 €

**Contacts**

+39 030 831096

+39 030 8913312

[offerte@gambamacchine.it](mailto:offerte@gambamacchine.it)

**Where we are**

**Headquarter and Warehouse 1**

Via Artigiani, 32 - 25063

Gardone V.T. Brescia - Italia

**Warehouse 2**

Via Caduti del lavoro 41, 25030

Coccaglio Brescia - Italia