

# RIBON RI250

**Category** Grinding Machine

**Type** Internal

**Made** RIBON

**Model** RI250

**Capacity** 180x250 mm



## Technical specifications

### WORKING CAPACITY

**Notes** Mandrino interni 12000 - 40000 rpm  
**Centres height** 180 mm

### WHEELHEAD

**Notes** Mola per sfacciatura

### WORKPIECE HEAD

**Rotating speed** 80-760 Rpm

## Gamba Macchine Srl

V.A.T. IT00639540988

C.F./R.I. 01581570171

REA 248813 BS

C.S. 802.165,00 €

## Contacts

+39 030 831096

+39 030 8913312

offerte@gambamacchine.it

## Where we are

### Headquarter and Warehouse 1

Via Artigiani, 32 - 25063

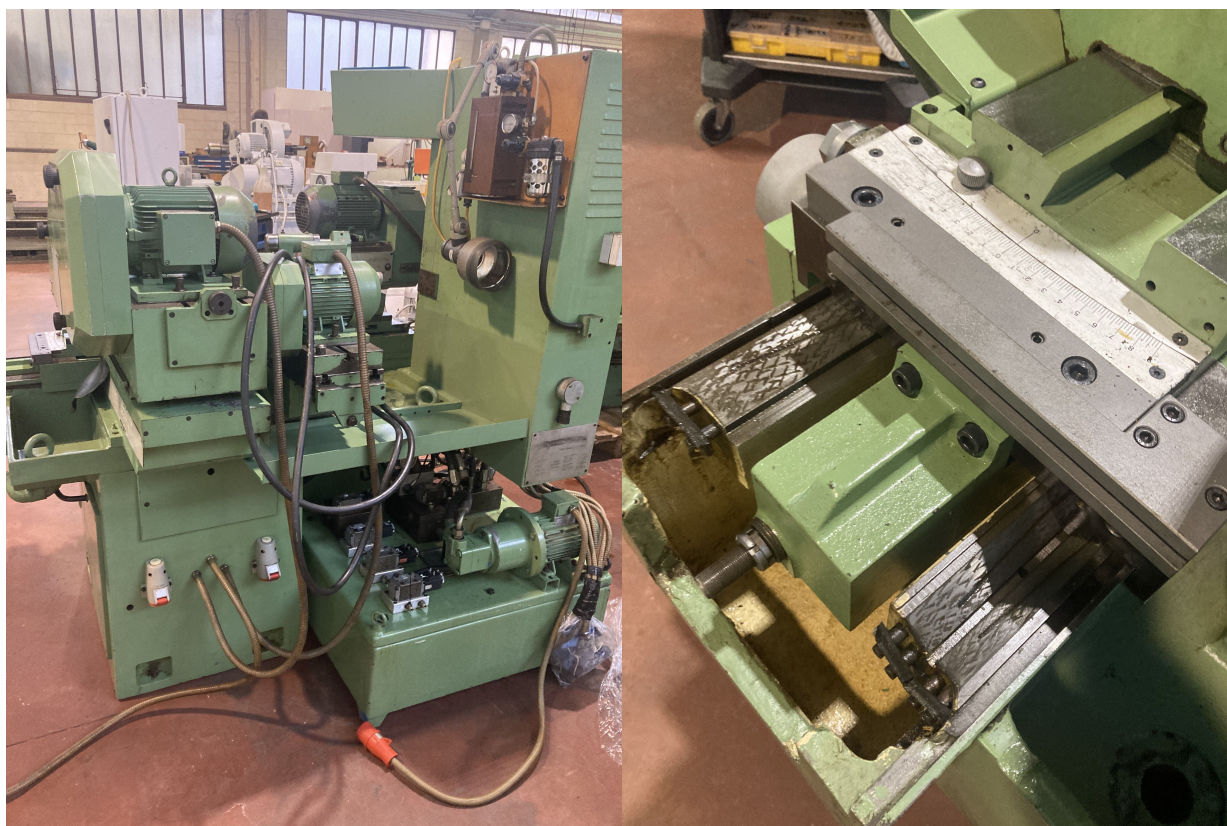
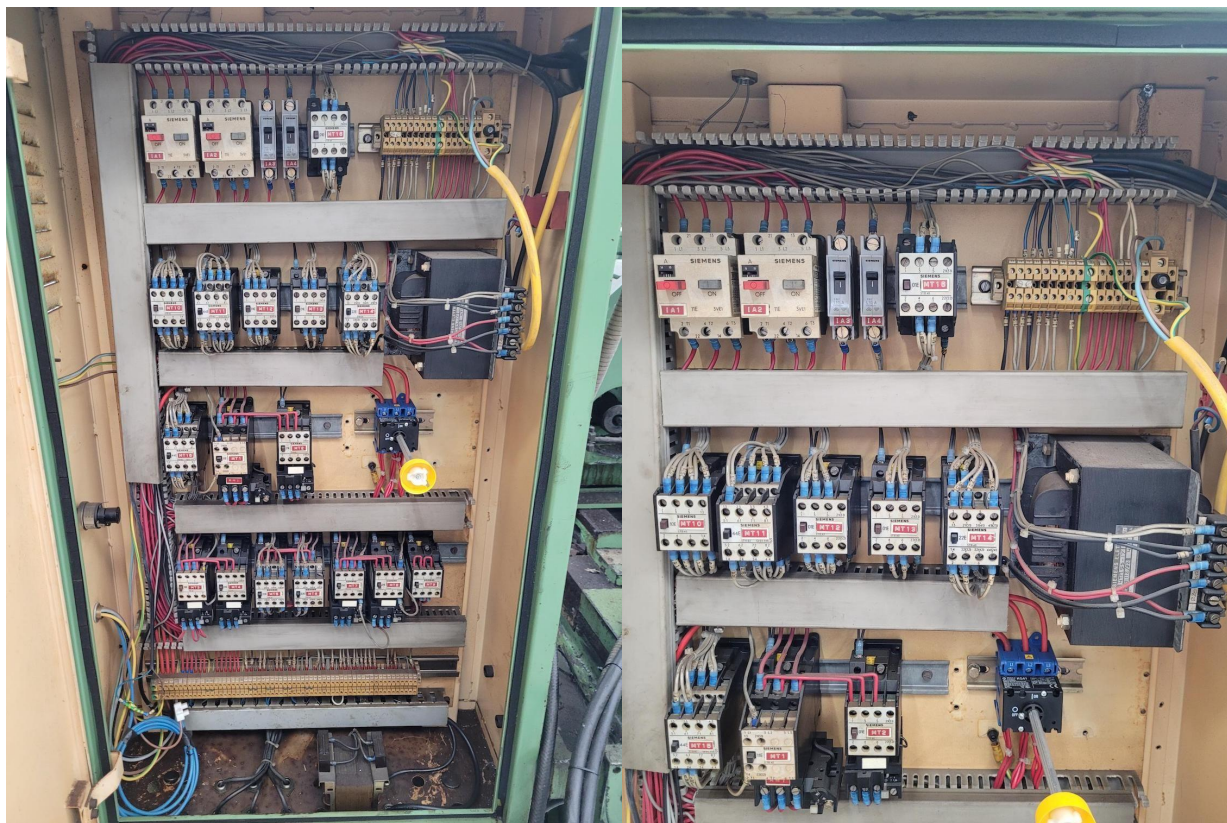
Gardone V.T. Brescia - Italia

### Warehouse 2

Via Caduti del lavoro 41, 25030

Coccaglio Brescia - Italia





**Gamba Macchine Srl**

**Contacts**

**Where we are**

V.A.T. IT00639540988

+39 030 831096

**Headquarter and Warehouse 1**

**Warehouse 2**

C.F./R.I. 01581570171

+39 030 8913312

Via Artigiani, 32 - 25063

Via Caduti del lavoro 41, 25030

REA 248813 BS

offerte@gambamacchine.it

Gardone V.T. Brescia - Italia

Coccaglio Brescia - Italia

C.S. 802.165,00 €





**Gamba Macchine Srl**

**V.A.T.** IT00639540988

**C.F./R.I.** 01581570171

**REA** 248813 BS

**C.S.** 802.165,00 €

**Contacts**

+39 030 831096

+39 030 8913312

[offerte@gambamacchine.it](mailto:offerte@gambamacchine.it)

**Where we are**

**Headquarter and Warehouse 1**

Via Artigiani, 32 - 25063

Gardone V.T. Brescia - Italia

**Warehouse 2**

Via Caduti del lavoro 41, 25030

Coccaglio Brescia - Italia