

TACCHELLA 612 UA

Category Grinding Machine

Made TACCHELLA

Type ID/OD

Model 612 UA

Capacity 600x240 mm



Technical specifications

WORKING CAPACITY

Centres distance 600 mm
Centres height 120 mm
Cross (X) 250 mm
Max grinding diameter 240 mm
Max internal diameter 10/270 mm
Max internal depth 440 mm

LEFT WHEEL

Wheel band thickness 70 mm
Max wheel diameter 355 mm
Hole diameter 127 mm

TABLE

Stroke 600 mm
Cross speed 100/7000 mm/min
Max workpiece weight 100 Kg
Tilt 10°

WORKPIECE HEAD

Rotating speed 22/580 Rpm
Tilt 90°
Taper mk3

WHEELHEAD

External spindle power 4 Kw
Internal spindle power 1,1 Kw
External spindle speed 1640/1900 Rpm

Total power supply 6,45 Kw
Machine total weight 2400 Kg
Tooling included apparecchio per interni
Open steadies si
Availability pronta
Available in stock si
Available under power si

Gamba Macchine Srl

V.A.T. IT00639540988

C.F./R.I. 01581570171

REA 248813 BS

C.S. 802.165,00 €

Contacts

+39 030 831096

+39 030 8913312

offerte@gambamacchine.it

Where we are

Headquarter and Warehouse 1

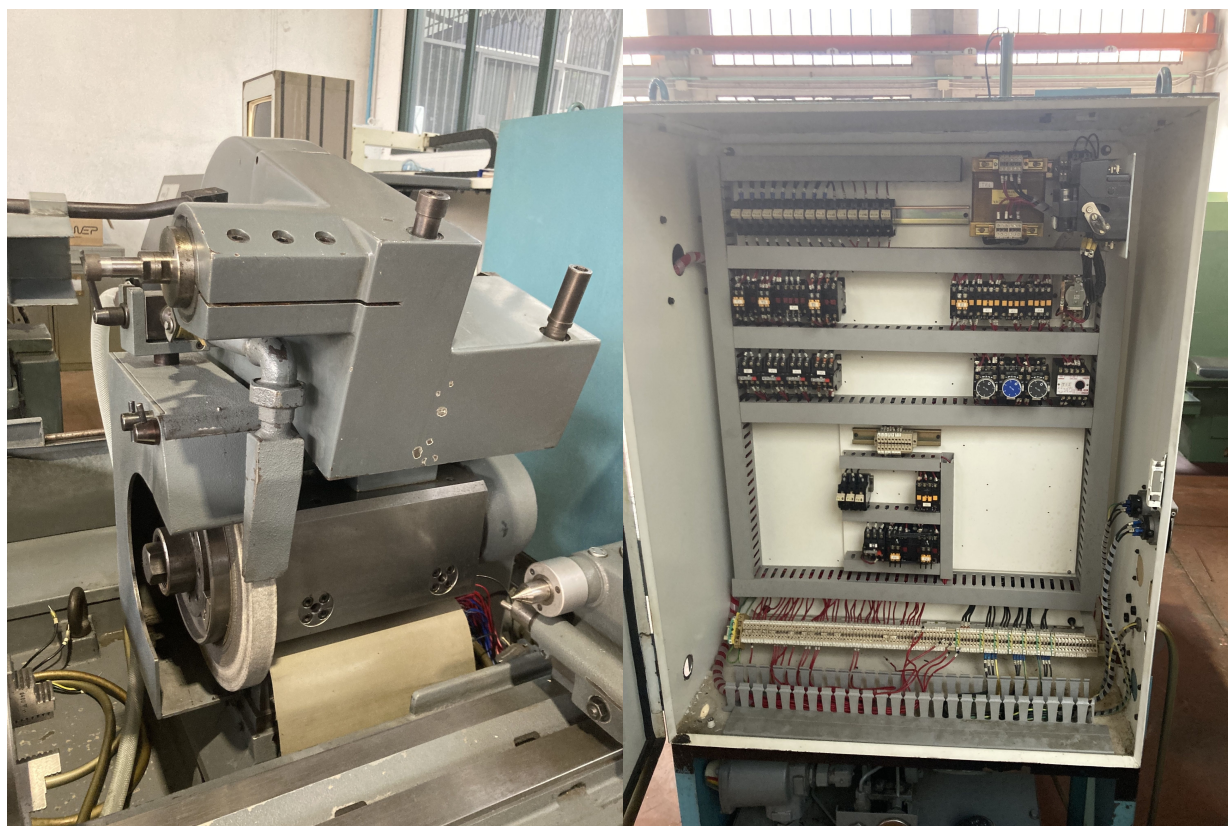
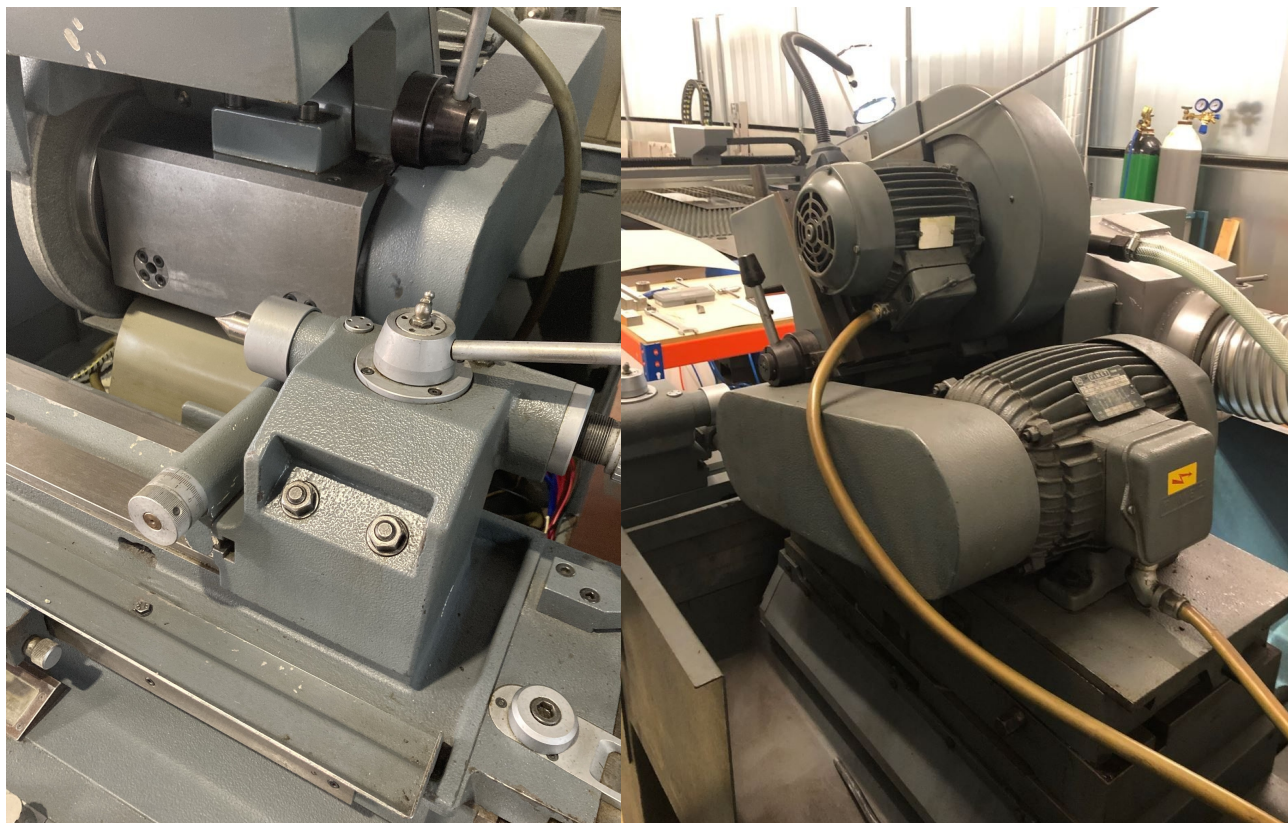
Via Artigiani, 32 - 25063

Gardone V.T. Brescia - Italia

Warehouse 2

Via Caduti del lavoro 41, 25030

Coccaglio Brescia - Italia



Gamba Macchine Srl

Contacts

Where we are

V.A.T. IT00639540988

+39 030 831096

Headquarter and Warehouse 1

Warehouse 2

C.F./R.I. 01581570171

+39 030 8913312

Via Artigiani, 32 - 25063

Via Caduti del lavoro 41, 25030

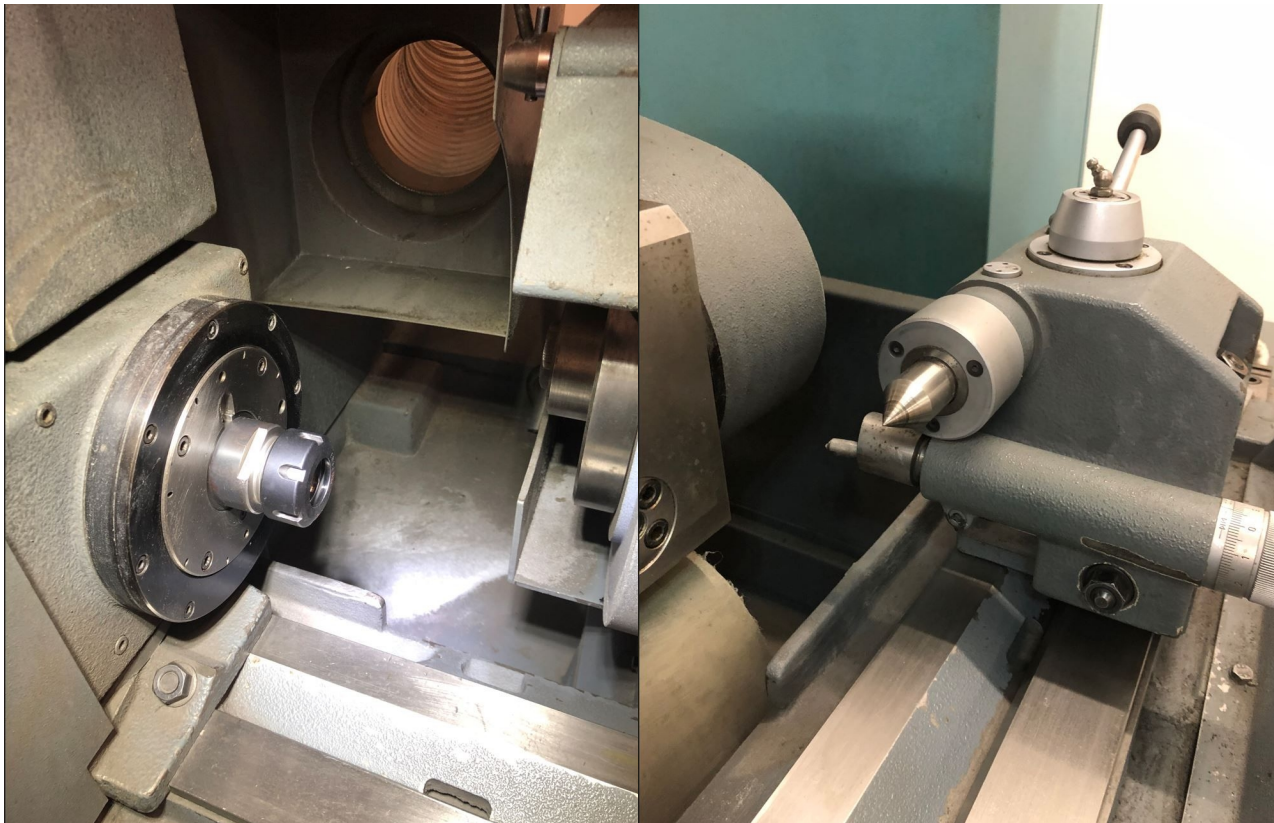
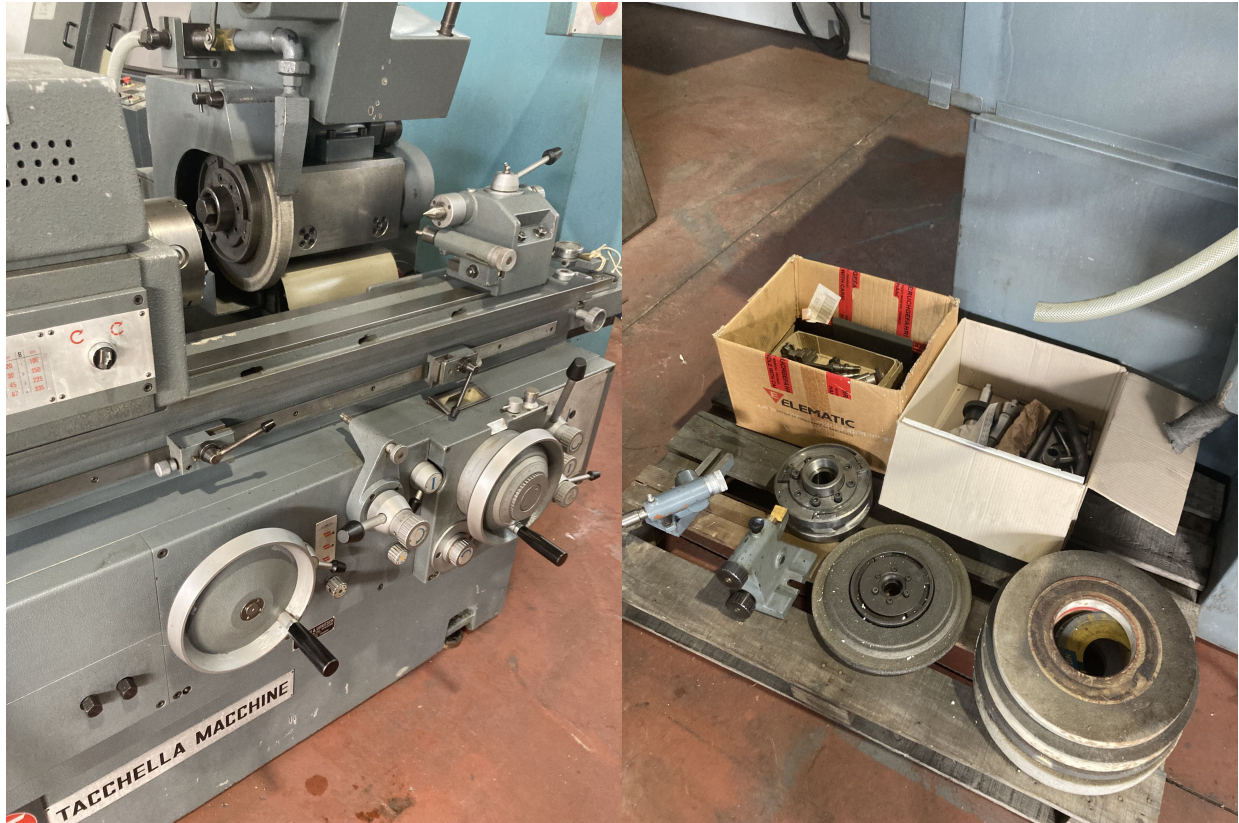
REA 248813 BS

offerte@gambamacchine.it

Gardone V.T. Brescia - Italia

Coccaglio Brescia - Italia

C.S. 802.165,00 €



Gamba Macchine Srl

V.A.T. IT00639540988

C.F./R.I. 01581570171

REA 248813 BS

C.S. 802.165,00 €

Contacts

+39 030 831096

+39 030 8913312

offerte@gambamacchine.it

Where we are

Headquarter and Warehouse 1

Via Artigiani, 32 - 25063

Gardone V.T. Brescia - Italia

Warehouse 2

Via Caduti del lavoro 41, 25030

Coccaglio Brescia - Italia



Gamba Macchine Srl

Contacts

Where we are

V.A.T. IT00639540988

+39 030 831096

Headquarter and Warehouse 1

Warehouse 2

C.F./R.I. 01581570171

+39 030 8913312

Via Artigiani, 32 - 25063

Via Caduti del lavoro 41, 25030

REA 248813 BS

offerte@gambamacchine.it

Gardone V.T. Brescia - Italia

Coccaglio Brescia - Italia

C.S. 802.165,00 €