

JOHANSSON 21P-A

Category Grinding Machine

Made JOHANSSON

Type Cylindrical

Model 21P-A

Capacity 3000x285 mm



Technical specifications

WORKING CAPACITY

Max grinding diameter 570 mm
Centres distance 3000 mm
Centres height 285 mm

LEFT WHEEL

Max wheel diameter 760 mm
Wheel band thickness 150 mm

WORKPIECE HEAD

Speed regulation regolazione continua

Gamba Macchine Srl

V.A.T. IT00639540988

C.F./R.I. 01581570171

REA 248813 BS

C.S. 802.165,00 €

Contacts

+39 030 831096

+39 030 8913312

offerte@gambamacchine.it

Where we are

Headquarter and Warehouse 1

Via Artigiani, 32 - 25063

Gardone V.T. Brescia - Italia

Warehouse 2

Via Caduti del lavoro 41, 25030

Coccaglio Brescia - Italia



Gamba Macchine Srl

Contacts

Where we are

V.A.T. IT00639540988

+39 030 831096

Headquarter and Warehouse 1

Warehouse 2

C.F./R.I. 01581570171

+39 030 8913312

Via Artigiani, 32 - 25063

Via Caduti del lavoro 41, 25030

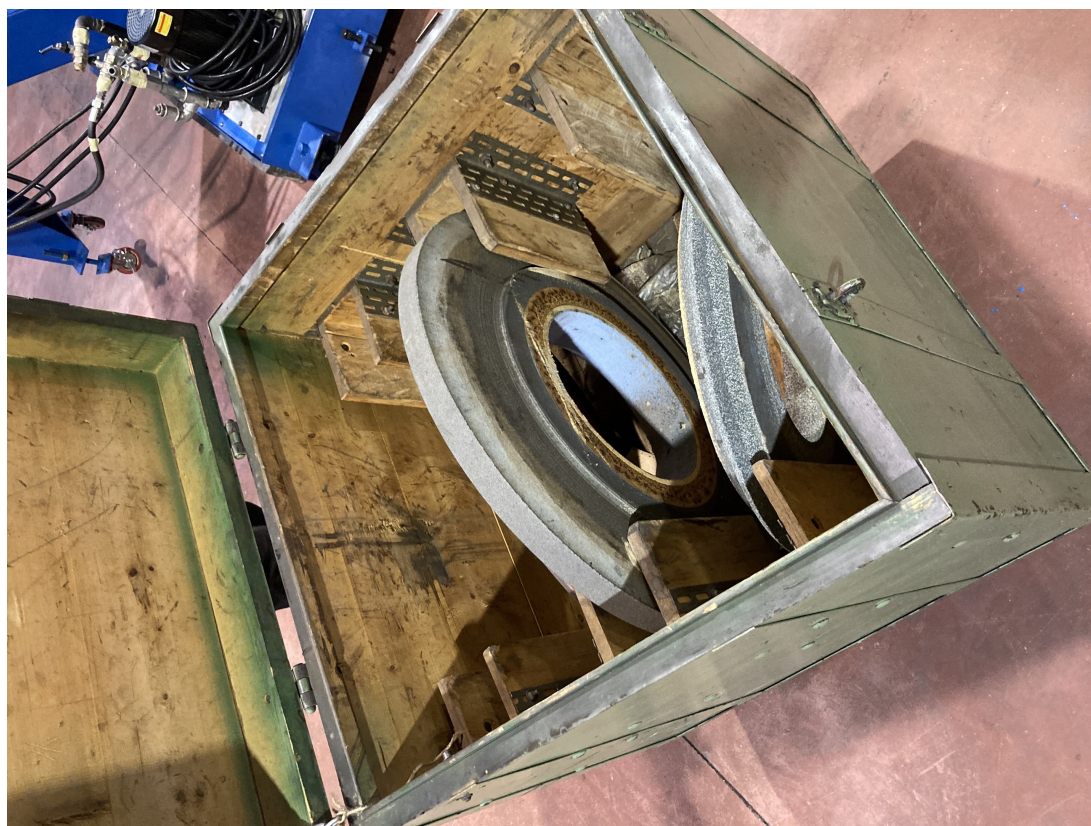
REA 248813 BS

offerte@gambamacchine.it

Gardone V.T. Brescia - Italia

Coccaglio Brescia - Italia

C.S. 802.165,00 €



Gamba Macchine Srl

Contacts

Where we are

V.A.T. IT00639540988

+39 030 831096

Headquarter and Warehouse 1

Warehouse 2

C.F./R.I. 01581570171

+39 030 8913312

Via Artigiani, 32 - 25063

Via Caduti del lavoro 41, 25030

REA 248813 BS

offerte@gambamacchine.it

Gardone V.T. Brescia - Italia

Coccaglio Brescia - Italia

C.S. 802.165,00 €



Gamba Macchine Srl

V.A.T. IT00639540988

C.F./R.I. 01581570171

REA 248813 BS

C.S. 802.165,00 €

Contacts

+39 030 831096

+39 030 8913312

offerte@gambamacchine.it

Where we are

Headquarter and Warehouse 1

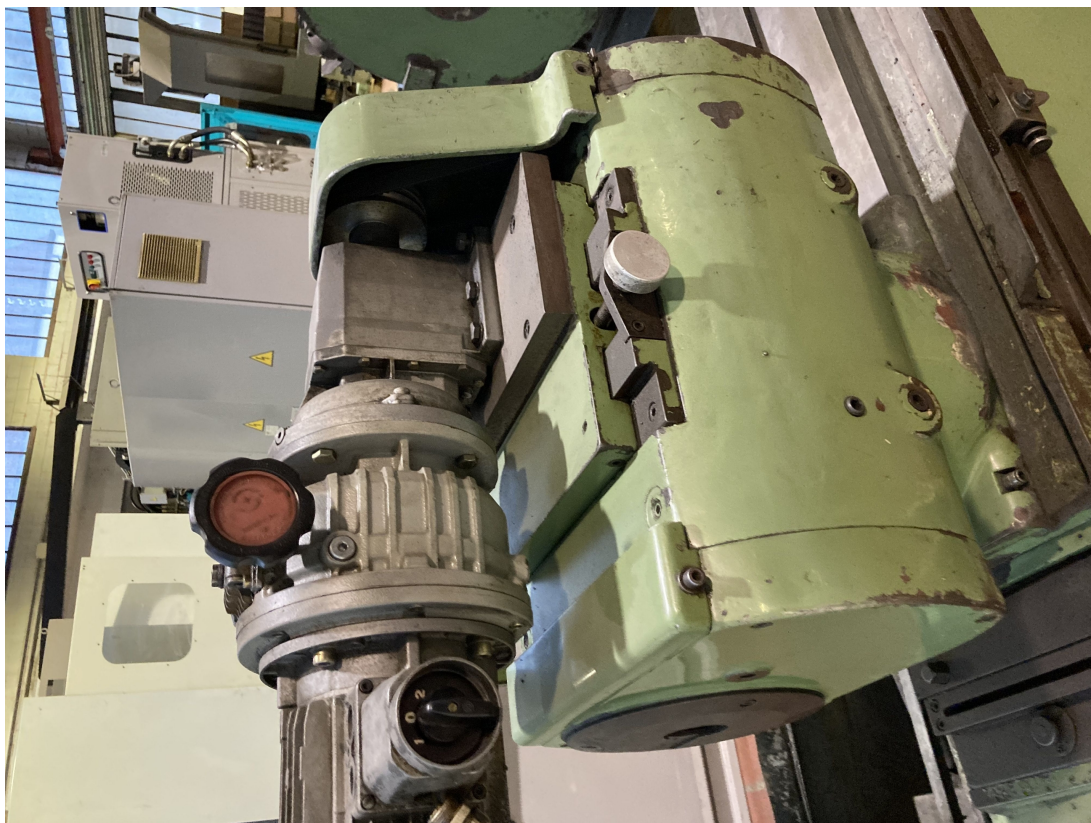
Via Artigiani, 32 - 25063

Gardone V.T. Brescia - Italia

Warehouse 2

Via Caduti del lavoro 41, 25030

Coccaglio Brescia - Italia



Gamba Macchine Srl

V.A.T. IT00639540988

C.F./R.I. 01581570171

REA 248813 BS

C.S. 802.165,00 €

Contacts

+39 030 831096

+39 030 8913312

offerte@gambamacchine.it

Where we are

Headquarter and Warehouse 1

Via Artigiani, 32 - 25063

Gardone V.T. Brescia - Italia

Warehouse 2

Via Caduti del lavoro 41, 25030

Coccaglio Brescia - Italia



Gamba Macchine Srl

V.A.T. IT00639540988

C.F./R.I. 01581570171

REA 248813 BS

C.S. 802.165,00 €

Contacts

+39 030 831096

+39 030 8913312

offerte@gambamacchine.it

Where we are

Headquarter and Warehouse 1

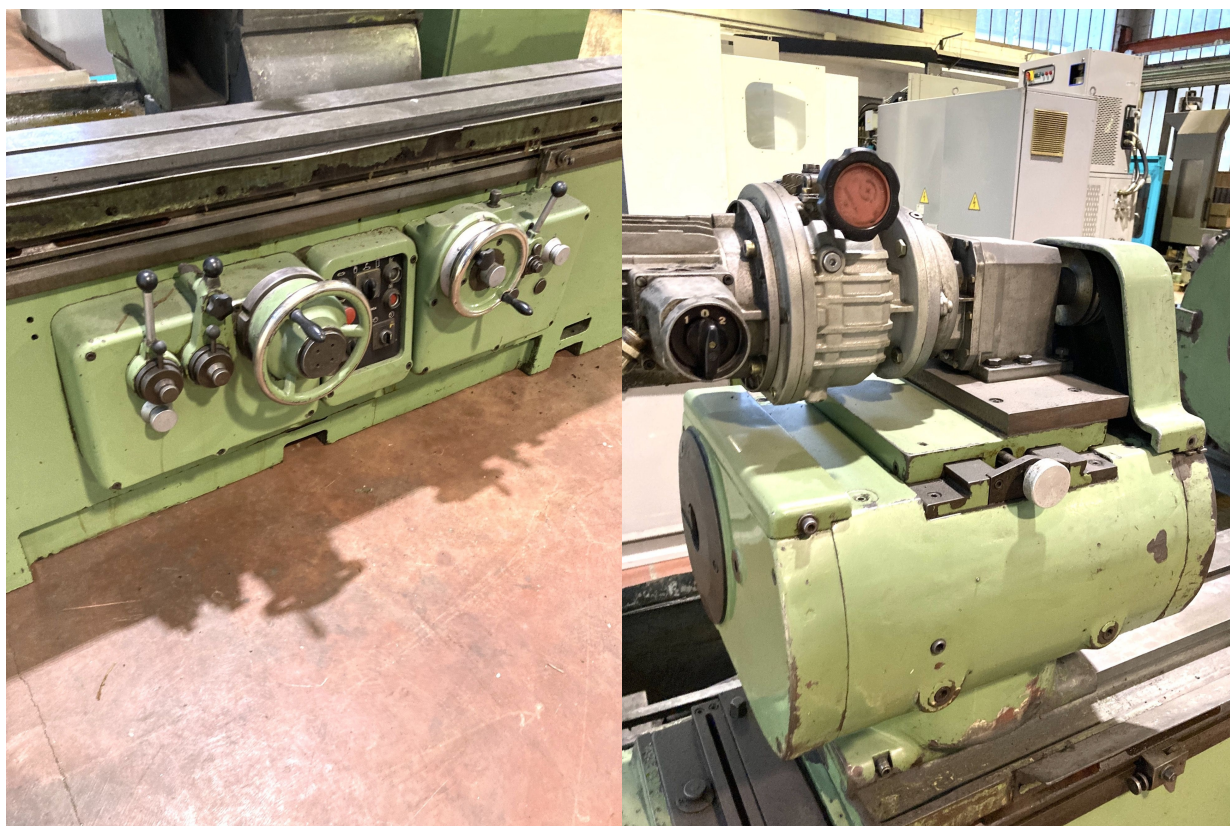
Via Artigiani, 32 - 25063

Gardone V.T. Brescia - Italia

Warehouse 2

Via Caduti del lavoro 41, 25030

Coccaglio Brescia - Italia



Gamba Macchine Srl

Contacts

Where we are

V.A.T. IT00639540988

+39 030 831096

Headquarter and Warehouse 1

Warehouse 2

C.F./R.I. 01581570171

+39 030 8913312

Via Artigiani, 32 - 25063

Via Caduti del lavoro 41, 25030

REA 248813 BS

offerte@gambamacchine.it

Gardone V.T. Brescia - Italia

Coccaglio Brescia - Italia

C.S. 802.165,00 €



Gamba Macchine Srl

V.A.T. IT00639540988

C.F./R.I. 01581570171

REA 248813 BS

C.S. 802.165,00 €

Contacts

+39 030 831096

+39 030 8913312

offerte@gambamacchine.it

Where we are

Headquarter and Warehouse 1

Via Artigiani, 32 - 25063

Gardone V.T. Brescia - Italia

Warehouse 2

Via Caduti del lavoro 41, 25030

Coccaglio Brescia - Italia



Gamba Macchine Srl

V.A.T. IT00639540988

C.F./R.I. 01581570171

REA 248813 BS

C.S. 802.165,00 €

Contacts

+39 030 831096

+39 030 8913312

offerte@gambamacchine.it

Where we are

Headquarter and Warehouse 1

Via Artigiani, 32 - 25063

Gardone V.T. Brescia - Italia

Warehouse 2

Via Caduti del lavoro 41, 25030

Coccaglio Brescia - Italia