

# DOOSAN MX2000ST

**Category** Turning Machine

**Type** Multi-tasking

**Made** DOOSAN

**Model** MX2000ST

**Capacity**  $\varnothing 750 \times 1020$  mm



## Technical specifications

### Gamba Macchine Srl

V.A.T. IT00639540988

C.F./R.I. 01581570171

REA 248813 BS

C.S. 802.165,00 €

### Contacts

+39 030 831096

+39 030 8913312

offerte@gambamacchine.it

### Where we are

#### Headquarter and Warehouse 1

Via Artigiani, 32 - 25063

Gardone V.T. Brescia - Italia

#### Warehouse 2

Via Caduti del lavoro 41, 25030

Coccaglio Brescia - Italia

<b>WORKING CAPACITY</b>	<b>CNC</b>	<b>MAIN SPINDLE</b>
<p><b>Max bar working diameter</b> 65 mm  <b>Max swing diameter</b> 750 mm  <b>Max swing on the saddle</b> 600 mm  <b>Max working lenght</b> 1020 mm</p>	<p><b>CNC</b> Fanuc 18i-TB</p>	<p><b>Max rotation speed</b> 5000 rpm  <b>Spindle nose</b> ASA6"  <b>Spindle hole</b> 66 mm  <b>Max power</b> 22 Kw  <b>Accuracy (C axis)</b> 0,001°</p>
<b>MILLING HEAD</b>	<b>TORRETTA INFERIORE</b>	<b>ATC</b>
<p><b>Spindle taper</b> CAPTO C6  <b>Axis stroke X</b> 555 mm  <b>Rapid feed X</b> 24 m/min  <b>Axis stroke Z</b> 1095 mm  <b>Rapid feed Z</b> 24 m/min  <b>Axis stroke Y</b> 160 (+/-80) mm  <b>Rapid feed Y</b> 16 m/min  <b>B axis working capacity</b> 240 (+/-120) °  <b>Accuracy (B axis)</b> 15 °  <b>Spindle speed</b> 10000 rpm  <b>Spindle power</b> 15 Kw</p>	<p><b>Positions number</b> 12  <b>Rotation time (1 pos)</b> 0,2 sec.  <b>Number of driven stations</b> 12  <b>Driven tools speed</b> 4000 rpm  <b>Driven tools power</b> 5,5 Kw  <b>Axis stroke X2</b> 185 mm  <b>Axis stroke Z2</b> 1140 mm</p>	<p><b>Max tool diameter</b> 90 mm  <b>Max tool diam without adjacent tools</b> 120 mm  <b>Max tool length</b> 300 mm  <b>Positions</b> 80</p>
<b>SUBSPINDLE</b>	<p><b>Floor space</b> 4520x2495x2600 mm  <b>Machine total weight</b> 12300 Kg  <b>Max power requirement</b> 66,1 KVA Kw</p>	
<p><b>Max rotation speed</b> 5000 rpm  <b>Spindle nose</b> ASA6"  <b>Spindle hole</b> 66 mm  <b>Max power</b> 22 Kw  <b>Accuracy (C axis)</b> 0,001°  <b>Automatic B axis positioning</b> 1065 mm</p>		

**Gamba Macchine Srl**

**Contacts**

**Where we are**

V.A.T. IT00639540988

+39 030 831096

**Headquarter and Warehouse 1**

**Warehouse 2**

C.F./R.I. 01581570171

+39 030 8913312

Via Artigiani, 32 - 25063

Via Caduti del lavoro 41, 25030

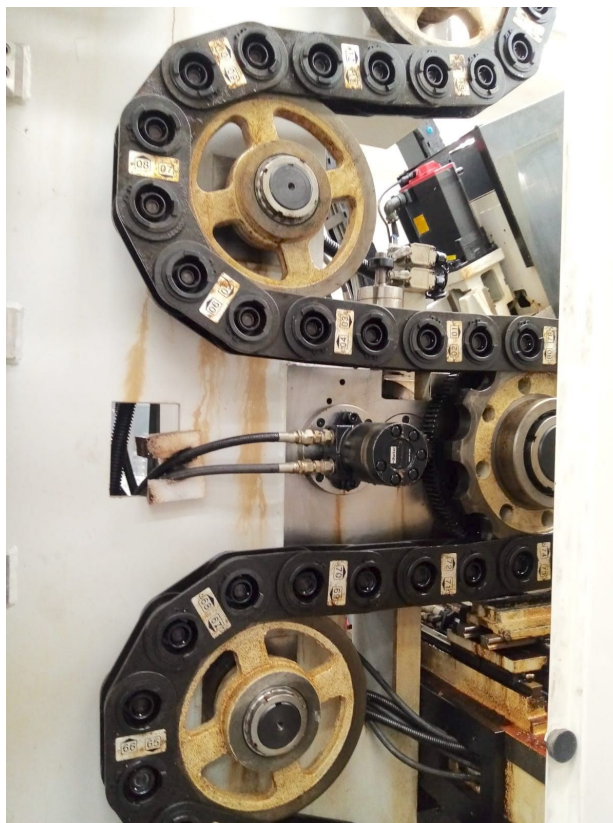
REA 248813 BS

offerte@gambamacchine.it

Gardone V.T. Brescia - Italia

Coccaglio Brescia - Italia

C.S. 802.165,00 €



**Gamba Macchine Srl**

**Contacts**

**Where we are**

V.A.T. IT00639540988

+39 030 831096

**Headquarter and Warehouse 1**

**Warehouse 2**

C.F./R.I. 01581570171

+39 030 8913312

Via Artigiani, 32 - 25063

Via Caduti del lavoro 41, 25030

REA 248813 BS

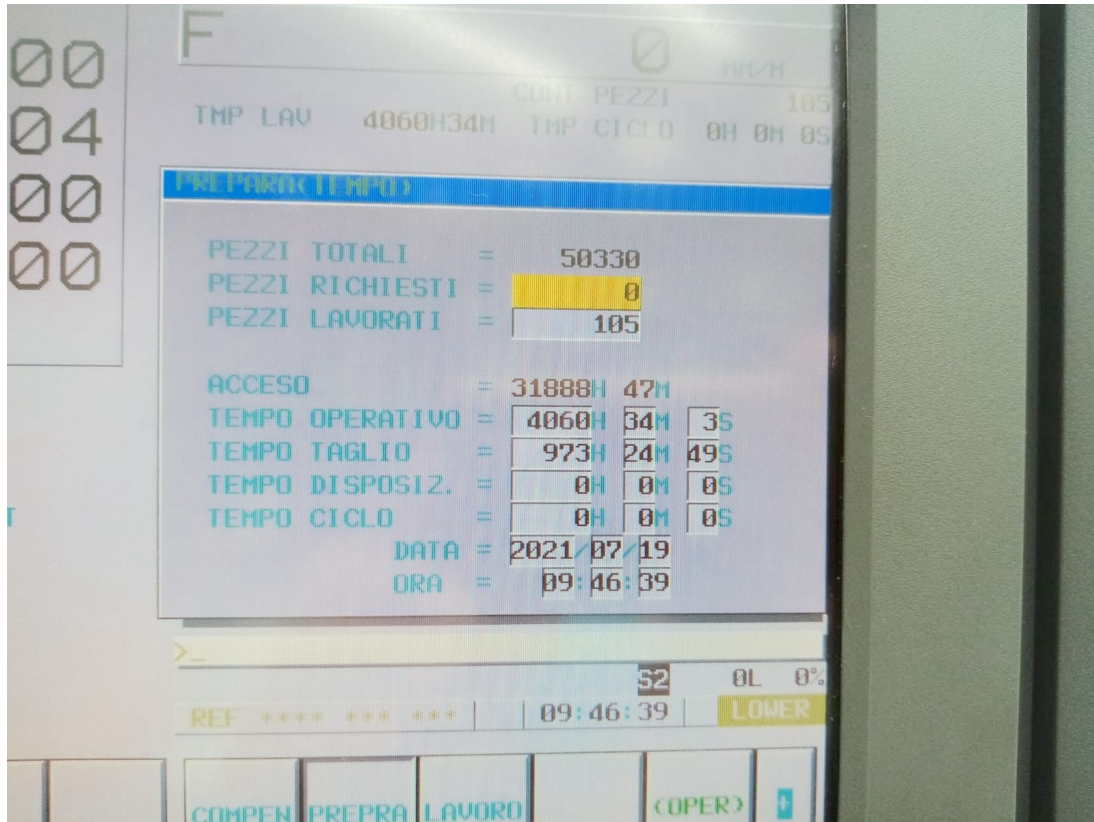
offerte@gambamacchine.it

Gardone V.T. Brescia - Italia

Coccaglio Brescia - Italia

C.S. 802.165,00 €





**Gamba Macchine Srl**

V.A.T. IT00639540988

C.F./R.I. 01581570171

REA 248813 BS

C.S. 802.165,00 €

**Contacts**

+39 030 831096

+39 030 8913312

offerte@gambamacchine.it

**Where we are**

**Headquarter and Warehouse 1**

Via Artigiani, 32 - 25063

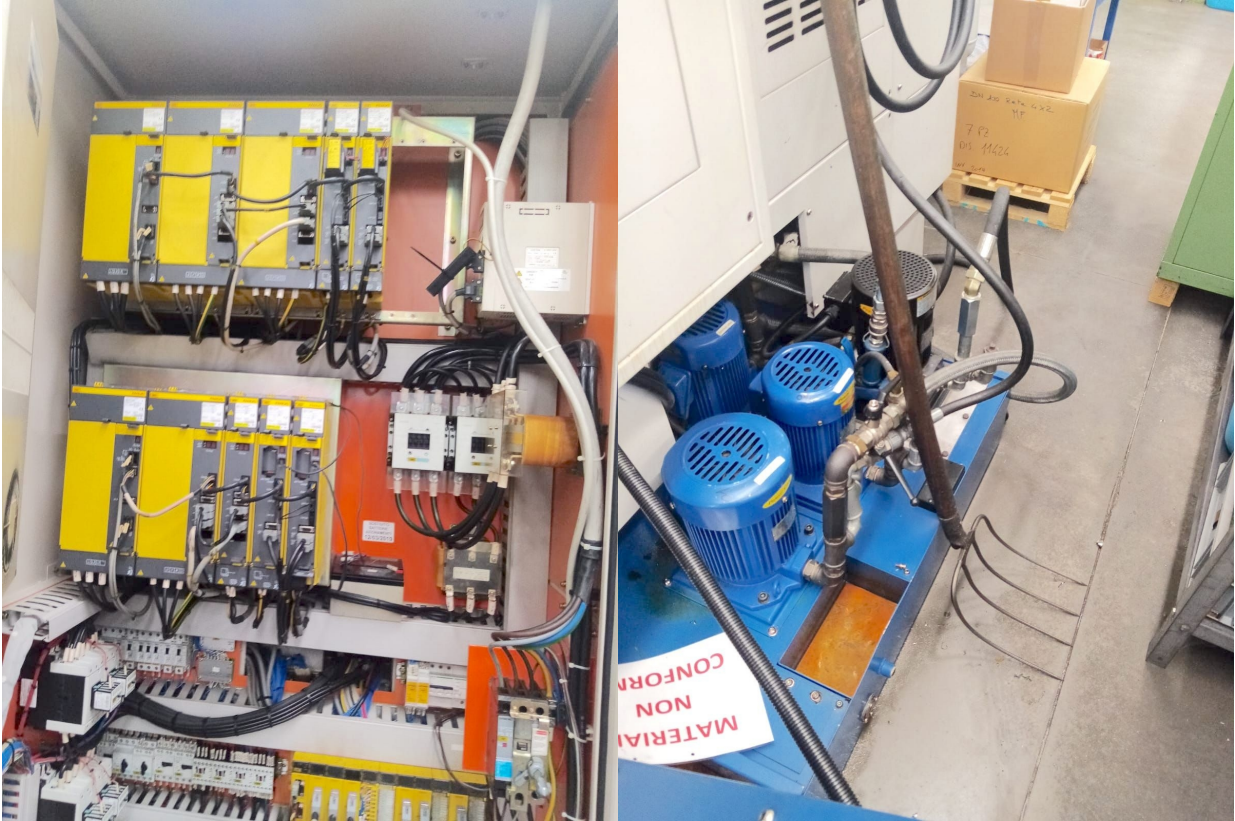
Gardone V.T. Brescia - Italia

**Warehouse 2**

Via Caduti del lavoro 41, 25030

Coccaglio Brescia - Italia





**Gamba Macchine Srl**

**Contacts**

**Where we are**

V.A.T. IT00639540988

+39 030 831096

**Headquarter and Warehouse 1**

C.F./R.I. 01581570171

+39 030 8913312

Via Artigiani, 32 - 25063

REA 248813 BS

offerte@gambamacchine.it

Gardone V.T. Brescia - Italia

C.S. 802.165,00 €

**Warehouse 2**

Via Caduti del lavoro 41, 25030

Coccaglio Brescia - Italia



**Gamba Machine Srl**

**Contacts**

**Where we are**

V.A.T. IT00639540988

+39 030 831096

**Headquarter and Warehouse 1**

**Warehouse 2**

C.F./R.I. 01581570171

+39 030 8913312

Via Artigiani, 32 - 25063

Via Caduti del lavoro 41, 25030

REA 248813 BS

offerte@gambamacchine.it

Gardone V.T. Brescia - Italia

Coccaglio Brescia - Italia

C.S. 802.165,00 €





**Gamba Macchine Srl**

**Contacts**

**Where we are**

V.A.T. IT00639540988

+39 030 831096

**Headquarter and Warehouse 1**

C.F./R.I. 01581570171

+39 030 8913312

Via Artigiani, 32 - 25063

REA 248813 BS

offerte@gambamacchine.it

Gardone V.T. Brescia - Italia

C.S. 802.165,00 €

**Warehouse 2**

Via Caduti del lavoro 41, 25030

Coccaglio Brescia - Italia





**Gamba Macchine Srl**

**Contacts**

**Where we are**

V.A.T. IT00639540988

+39 030 831096

**Headquarter and Warehouse 1**

**Warehouse 2**

C.F./R.I. 01581570171

+39 030 8913312

Via Artigiani, 32 - 25063

Via Caduti del lavoro 41, 25030

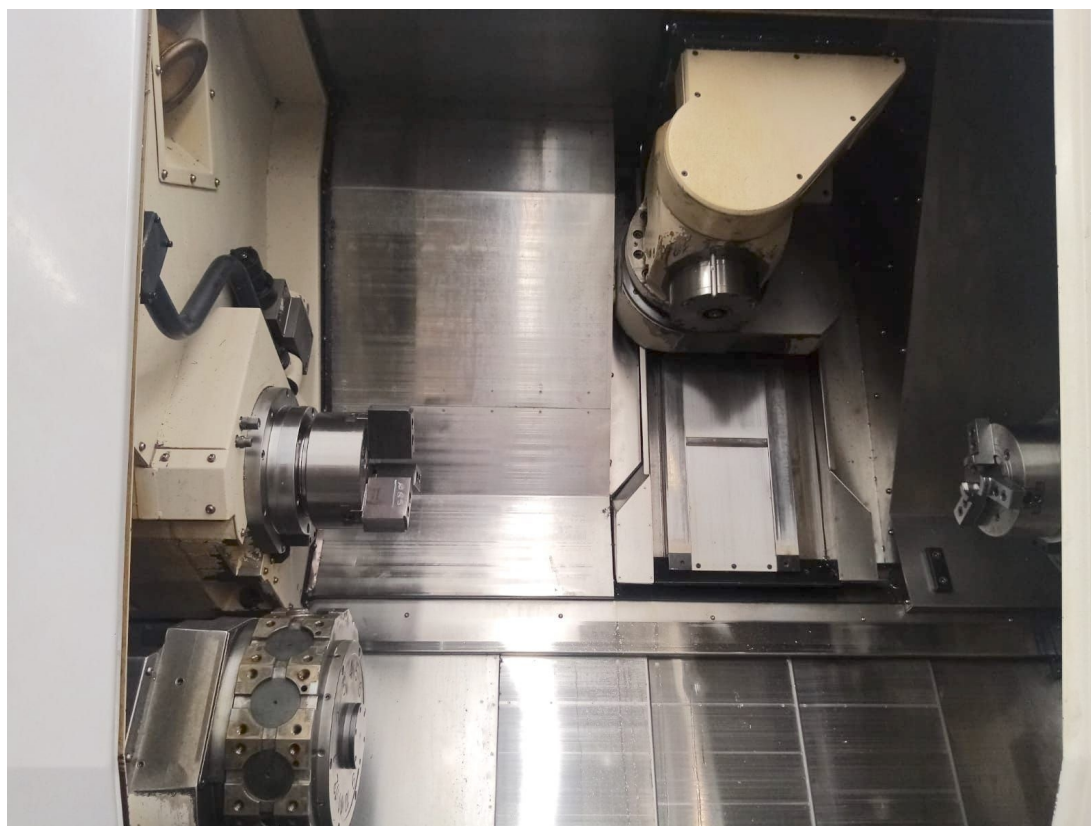
REA 248813 BS

offerte@gambamacchine.it

Gardone V.T. Brescia - Italia

Coccaglio Brescia - Italia

C.S. 802.165,00 €



**Gamba Macchine Srl**

**Contacts**

**Where we are**

V.A.T. IT00639540988

+39 030 831096

**Headquarter and Warehouse 1**

**Warehouse 2**

C.F./R.I. 01581570171

+39 030 8913312

Via Artigiani, 32 - 25063

Via Caduti del lavoro 41, 25030

REA 248813 BS

offerte@gambamacchine.it

Gardone V.T. Brescia - Italia

Coccaglio Brescia - Italia

C.S. 802.165,00 €





**Gamba Macchine Srl**

**Contacts**

**Where we are**

V.A.T. IT00639540988

+39 030 831096

**Headquarter and Warehouse 1**

**Warehouse 2**

C.F./R.I. 01581570171

+39 030 8913312

Via Artigiani, 32 - 25063

Via Caduti del lavoro 41, 25030

REA 248813 BS

offerte@gambamacchine.it

Gardone V.T. Brescia - Italia

Coccaglio Brescia - Italia

C.S. 802.165,00 €