

# SACHMAN T314 GP

**Category** Milling machine

**Made** SACHMAN

**Type** T type

**Model** T314 GP

**Capacity** 3000x1400x1500 mm



## Technical specifications

<p><b>WORKING CAPACITY</b></p>	<p><b>CNC</b></p>	<p><b>SPINDLE</b></p>
<p><b>Longitudinal (X)</b> 3000 mm <b>Vertical (Y)</b> 1500 mm <b>Cross column (Z)</b> 1400 mm <b>Axes support</b> Guide plane</p>	<p><b>CNC</b> Selca S4045 <b>Drives</b> Siemens <b>Notes</b> Volantino remotato Selca S2</p>	<p><b>Rotating speed</b> 5000 Rpm <b>Taper</b> ISO50 <b>Torque</b> 850 Nm</p>
<p><b>ATC</b></p>	<p><b>TABLE 1</b></p>	<p><b>HEAD 1</b></p>
<p><b>Positions</b> 40</p>	<p><b>Surface</b> 3200x1100 mm <b>Translation</b> 3000 mm <b>Capacity</b> 10.000 Kg</p>	<p><b>Type</b> KOSMO5000 <b>Spindle taper</b> ISO50 <b>A axis</b> 120x3° <b>C axis</b> 144x2,5° <b>Max speed</b> 5000 Rpm <b>Coolant</b> CTS 15Bar interni <b>Max torque</b> 850 Nm</p>
<p><b>FEEDS</b></p>	<p><b>Floor space</b> 7688x5091x3971 mm <b>High Pressure</b> 15Bar interni <b>Electrical drawings</b> Yes <b>Maintenance &amp; Use books</b> Yes <b>Chip conveyor</b> Si <b>Total power supply</b> 50 Kw <b>Machine total weight</b> 25115 Kg</p>	
<p><b>Rapid X</b> 12 m/min <b>Rapid Y</b> 12 m/min <b>Rapid Z</b> 12 m/min</p>		

### Gamba Macchine Srl

### Contacts

### Where we are

V.A.T. IT00639540988

+39 030 831096

### Headquarter and Warehouse 1

### Warehouse 2

C.F./R.I. 01581570171

+39 030 8913312

Via Artigiani, 32 - 25063

Via Caduti del lavoro 41, 25030

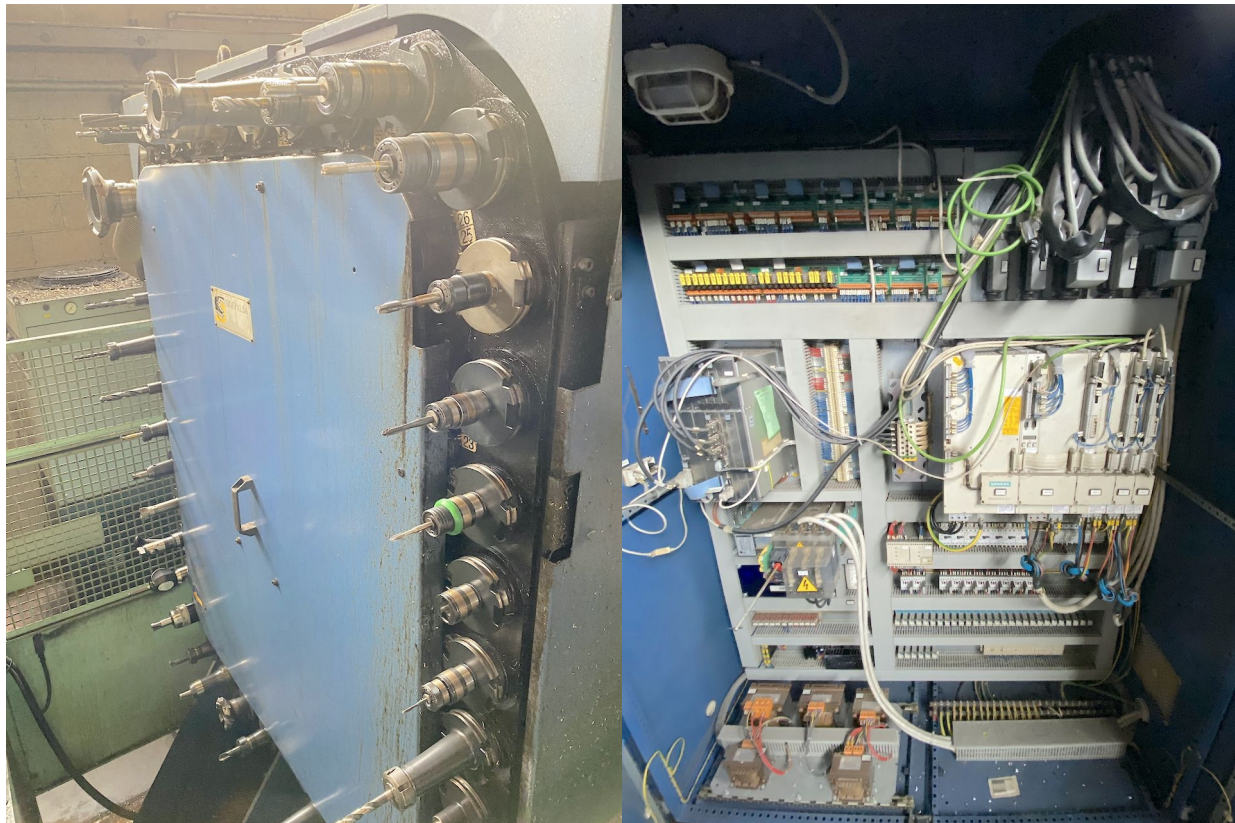
REA 248813 BS

offerte@gambamacchine.it

Gardone V.T. Brescia - Italia

Coccaglio Brescia - Italia

C.S. 802.165,00 €



**Gamba Macchine Srl**

**Contacts**

**Where we are**

V.A.T. IT00639540988

+39 030 831096

**Headquarter and Warehouse 1**

**Warehouse 2**

C.F./R.I. 01581570171

+39 030 8913312

Via Artigiani, 32 - 25063

Via Caduti del lavoro 41, 25030

REA 248813 BS

offerte@gambamacchine.it

Gardone V.T. Brescia - Italia

Coccaglio Brescia - Italia

C.S. 802.165,00 €



**Gamba Macchine Srl**

**Contacts**

**Where we are**

V.A.T. IT00639540988

+39 030 831096

C.F./R.I. 01581570171

+39 030 8913312

REA 248813 BS

offerte@gambamacchine.it

C.S. 802.165,00 €

**Headquarter and Warehouse 1**

Via Artigiani, 32 - 25063

Gardone V.T. Brescia - Italia

**Warehouse 2**

Via Caduti del lavoro 41, 25030

Coccaglio Brescia - Italia



**Gamba Macchine Srl**

V.A.T. IT00639540988

C.F./R.I. 01581570171

REA 248813 BS

C.S. 802.165,00 €

**Contacts**

+39 030 831096

+39 030 8913312

offerte@gambamacchine.it

**Where we are**

**Headquarter and Warehouse 1**

Via Artigiani, 32 - 25063

Gardone V.T. Brescia - Italia

**Warehouse 2**

Via Caduti del lavoro 41, 25030

Coccaglio Brescia - Italia



**Gamba Macchine Srl**

**Contacts**

**Where we are**

V.A.T. IT00639540988

+39 030 831096

**Headquarter and Warehouse 1**

**Warehouse 2**

C.F./R.I. 01581570171

+39 030 8913312

Via Artigiani, 32 - 25063

Via Caduti del lavoro 41, 25030

REA 248813 BS

offerte@gambamacchine.it

Gardone V.T. Brescia - Italia

Coccaglio Brescia - Italia

C.S. 802.165,00 €