

# SACHMAN T20

**Category** Milling machine

**Made** SACHMAN

**Type** T type

**Model** T20

**Capacity** 3000x1500x1200 mm



## Technical specifications

### WORKING CAPACITY

**Longitudinal (X)** 3000 mm  
**Vertical (Y)** 1500 mm  
**Cross column (Z)** 1200 mm

### TABLE 1

**Surface** 3200x1100 mm

### CNC

**CNC** Heidenhain TNC410  
**Drives** Siemens

### HEAD 1

**Type** KOSMO4000  
**Spindle taper** ISO50 DIN69871B  
**Max power** 30 Kw  
**Max speed** 4000 Rpm  
**Coolant** 8 Bar attraverso il mandrino  
**A axis** 120x3°  
**C axis** 144x2,5°

### SPINDLE

**Rotating speed** 4000 Rpm  
**Taper** ISO50  
**Spindle power** 30 Kw

### Gamba Macchine Srl

V.A.T. IT00639540988

C.F./R.I. 01581570171

REA 248813 BS

C.S. 802.165,00 €

### Contacts

+39 030 831096

+39 030 8913312

offerte@gambamacchine.it

### Where we are

#### Headquarter and Warehouse 1

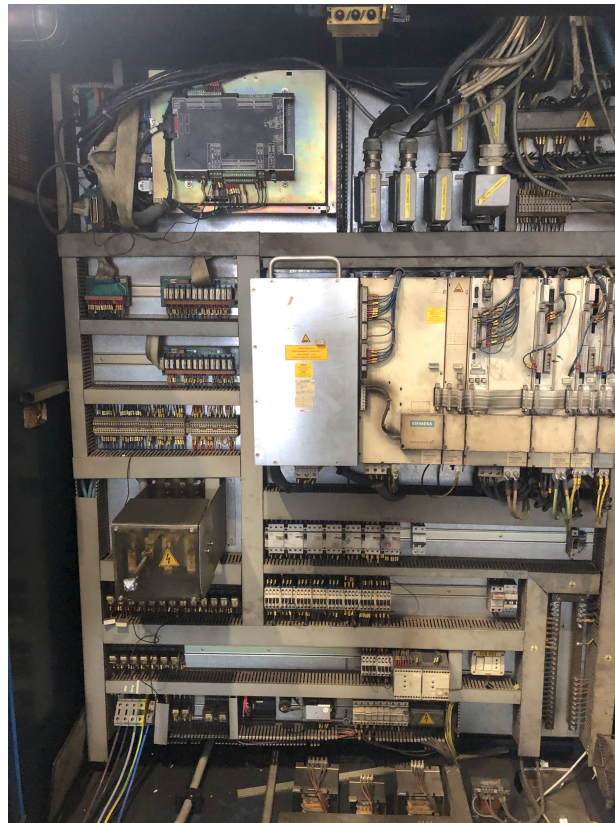
Via Artigiani, 32 - 25063

Gardone V.T. Brescia - Italia

#### Warehouse 2

Via Caduti del lavoro 41, 25030

Coccaglio Brescia - Italia



**Gamba Machine Srl**

V.A.T. IT00639540988

C.F./R.I. 01581570171

REA 248813 BS

C.S. 802.165,00 €

**Contacts**

+39 030 831096

+39 030 8913312

offerte@gambamacchine.it

**Where we are**

**Headquarter and Warehouse 1**

Via Artigiani, 32 - 25063

Gardone V.T. Brescia - Italia

**Warehouse 2**

Via Caduti del lavoro 41, 25030

Coccaglio Brescia - Italia



**Gamba Macchine Srl**

**Contacts**

**Where we are**

**V.A.T.** IT00639540988

+39 030 831096

**C.F./R.I.** 01581570171

+39 030 8913312

**REA** 248813 BS

[offerte@gambamacchine.it](mailto:offerte@gambamacchine.it)

**C.S.** 802.165,00 €

**Headquarter and Warehouse 1**

Via Artigiani, 32 - 25063

Gardone V.T. Brescia - Italia

**Warehouse 2**

Via Caduti del lavoro 41, 25030

Coccaglio Brescia - Italia