

# SACHMAN TRT314HS

**Category** Milling machine

**Made** SACHMAN

**Type** T type

**Model** TRT314HS

**Capacity** 2500x1400x1500 mm



## Technical specifications

<p><b>WORKING CAPACITY</b></p> <p><b>Longitudinal (X)</b> 2500 mm  <b>Vertical (Y)</b> 1500 mm  <b>Cross column (Z)</b> 1400 mm  <b>Axes support</b> Guide lineari a ricircolo di rulli</p>	<p><b>CNC</b></p> <p><b>CNC</b> SELCA 4045D  <b>Drives</b> Siemens  <b>Notes</b> Selnetwin4000 in rete Ethernet</p>	<p><b>SPINDLE</b></p> <p><b>Spindle power</b> 28/36 Kw  <b>Rotating speed</b> 5000 Rpm  <b>Taper</b> ISO50 DIN69871  <b>Gearbox</b> 2 gamme</p>
<p><b>FEEDS</b></p> <p><b>Rapid X</b> 20 m/min  <b>Rapid Y</b> 20 m/min  <b>Rapid Z</b> 20 m/min</p>	<p><b>ATC</b></p> <p><b>Positions</b> 20  <b>Max tool diameter</b> 120 mm  <b>Max diam with free adjacent space</b> 200 mm  <b>Max tool length</b> 400 mm  <b>Max tool weight</b> 20 Kg  <b>Tool taper</b> ISO50</p>	<p><b>TABLE 1</b></p> <p><b>Surface</b> 2000x1600 mm  <b>Accuracy (B axis)</b> 0,001°  <b>Capacity</b> 15000 Kg  <b>Notes</b> Cave a T: 8x22H7</p>
<p><b>HEAD 1</b></p> <p><b>Type</b> KOSMO4000  <b>Spindle taper</b> ISO50  <b>A axis</b> 120x3°  <b>C axis</b> 360x1°  <b>Max speed</b> 5000 Rpm  <b>Max power</b> 28/36 Kw</p>	<p><b>Total power supply</b> 48 Kw  <b>Machine total weight</b> 24670 Kg  <b>Floor space</b> 6607x5894x4099 mm  <b>Chip conveyor</b> SI  <b>Housing</b> Perimetrale completa  <b>CE Certification</b> Yes  <b>Chiller</b> SI  <b>Available under power</b> si</p>	

### Gamba Macchine Srl

### Contacts

### Where we are

V.A.T. IT00639540988

+39 030 831096

### Headquarter and Warehouse 1

### Warehouse 2

C.F./R.I. 01581570171

+39 030 8913312

Via Artigiani, 32 - 25063

Via Caduti del lavoro 41, 25030

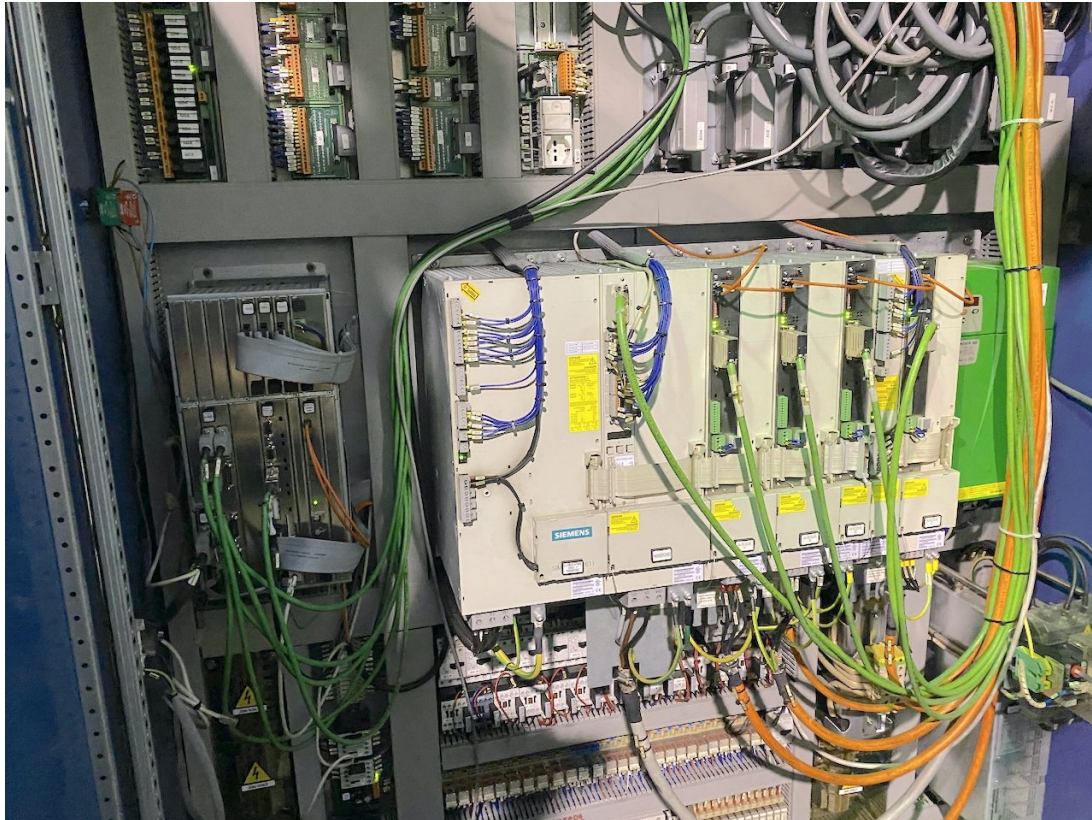
REA 248813 BS

offerte@gambamacchine.it

Gardone V.T. Brescia - Italia

Coccaglio Brescia - Italia

C.S. 802.165,00 €



**Gamba Macchine Srl**

V.A.T. IT00639540988  
C.F./R.I. 01581570171  
REA 248813 BS  
C.S. 802.165,00 €

**Contacts**

+39 030 831096  
+39 030 8913312  
offerte@gambamacchine.it

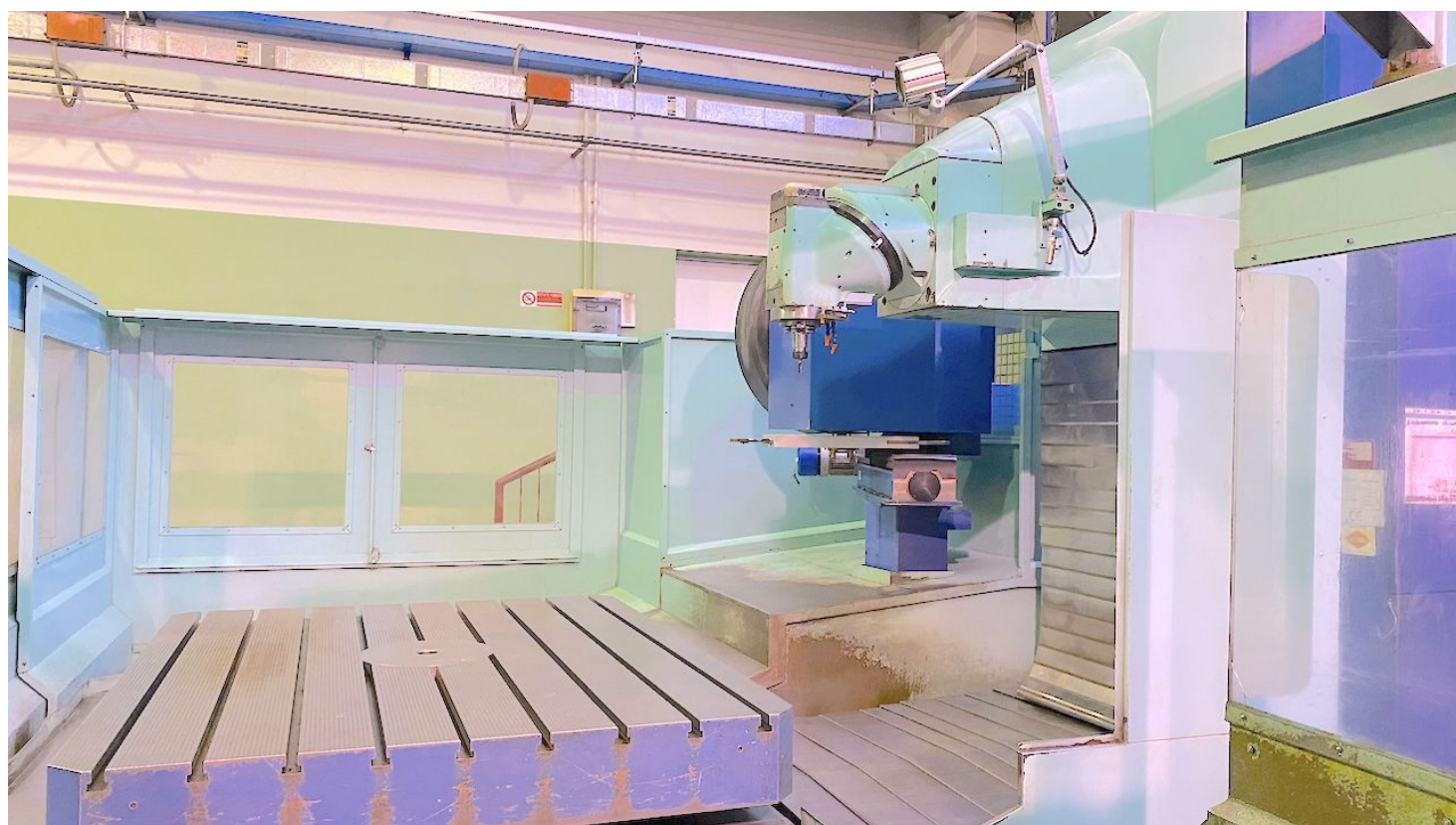
**Where we are**

**Headquarter and Warehouse 1**  
Via Artigiani, 32 - 25063  
Gardone V.T. Brescia - Italia

**Warehouse 2**

Via Caduti del lavoro 41, 25030  
Coccaglio Brescia - Italia





**Gamba Macchine Srl**

**Contacts**

**Where we are**

V.A.T. IT00639540988

+39 030 831096

**Headquarter and Warehouse 1**

**Warehouse 2**

C.F./R.I. 01581570171

+39 030 8913312

Via Artigiani, 32 - 25063

Via Caduti del lavoro 41, 25030

REA 248813 BS

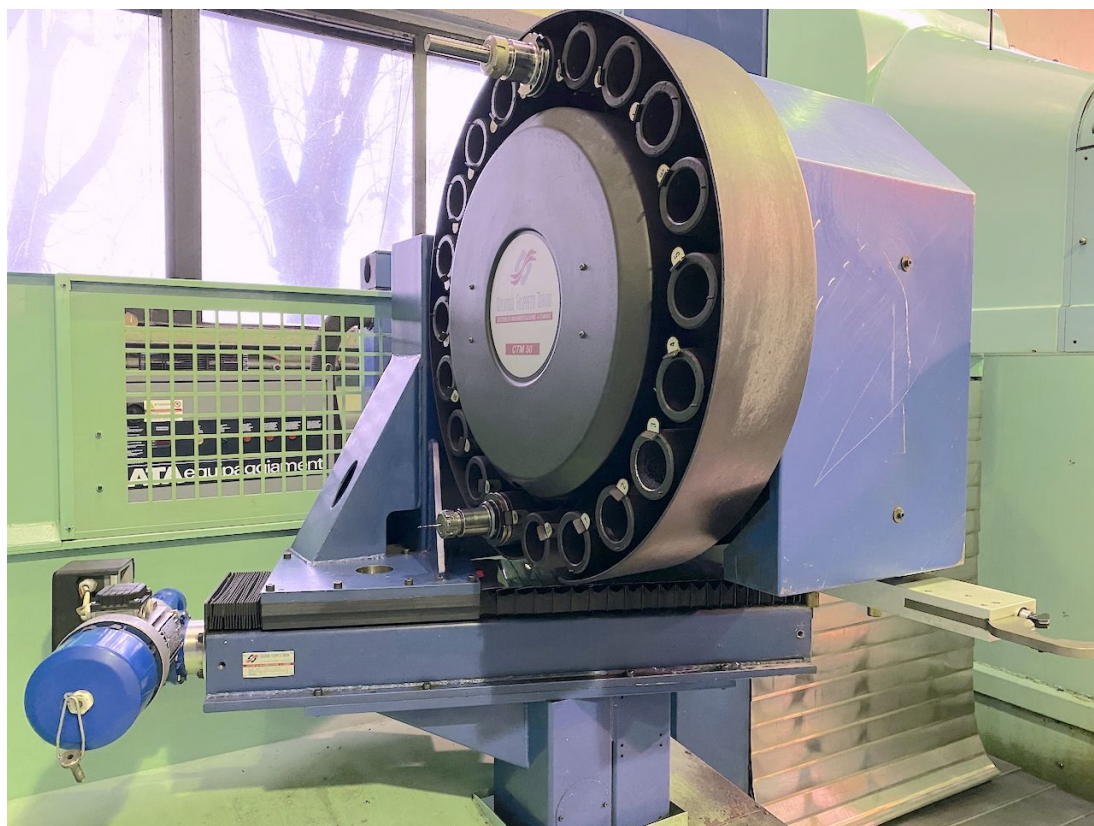
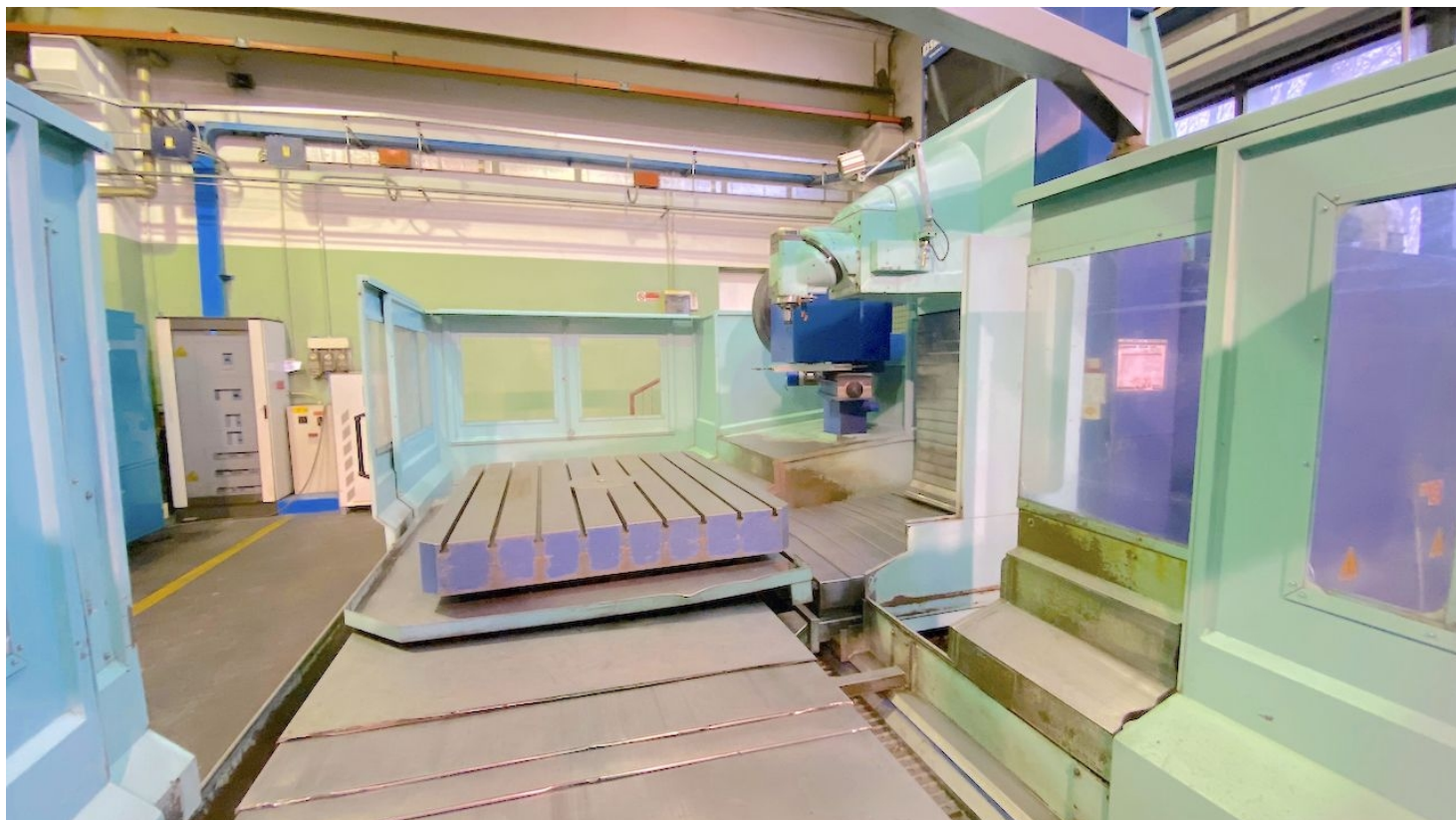
offerte@gambamacchine.it

Gardone V.T. Brescia - Italia

Coccaglio Brescia - Italia

C.S. 802.165,00 €





**Gamba Macchine Srl**

V.A.T. IT00639540988

C.F./R.I. 01581570171

REA 248813 BS

C.S. 802.165,00 €

**Contacts**

+39 030 831096

+39 030 8913312

offerte@gambamacchine.it

**Where we are**

**Headquarter and Warehouse 1**

Via Artigiani, 32 - 25063

Gardone V.T. Brescia - Italia

**Warehouse 2**

Via Caduti del lavoro 41, 25030

Coccaglio Brescia - Italia





**Gamba Macchine Srl**

**Contacts**

**Where we are**

V.A.T. IT00639540988

+39 030 831096

**Headquarter and Warehouse 1**

**Warehouse 2**

C.F./R.I. 01581570171

+39 030 8913312

Via Artigiani, 32 - 25063

Via Caduti del lavoro 41, 25030

REA 248813 BS

offerte@gambamacchine.it

Gardone V.T. Brescia - Italia

Coccaglio Brescia - Italia

C.S. 802.165,00 €



**Gamba Macchine Srl**

**V.A.T.** IT00639540988

**C.F./R.I.** 01581570171

**REA** 248813 BS

**C.S.** 802.165,00 €

**Contacts**

+39 030 831096

+39 030 8913312

[offerte@gambamacchine.it](mailto:offerte@gambamacchine.it)

**Where we are**

**Headquarter and Warehouse 1**

Via Artigiani, 32 - 25063

Gardone V.T. Brescia - Italia

**Warehouse 2**

Via Caduti del lavoro 41, 25030

Coccaglio Brescia - Italia