

ABWOOD RG1

Category Grinding Machine

Made ABWOOD

Type Surface

Model RG1

Capacity ø700 mm



Technical specifications

WORKING CAPACITY

Spindle nose axis - table distance 322 - 495
(senza piano magnetico) mm

Table tilt (C) +7/-7°

Cross RAM (Y) 350 mm

Notes max spessore con piano magnetico
150mm/senza piano magnetico 250mm

WHEEL

Max wheel diameter 350 mm

Wheel band thickness 51 mm

Hole diameter 127 mm

WHEEL SPINDLE

Spindle power 7,5 Kw

Rotating speed 1500 Rpm

MAGNETIC TABLE

Surface 600 mm

Machine total weight 3650 Kg

Floor space 2692x1320 mm

Total power supply 13,5 Kw

Housing area di lavoro

Tooling included diamantatore

TABLE

Diameter 600 mm

Notes +7° / -4°

Rotating speed 10-160 Rpm

Gamba Macchine Srl

V.A.T. IT00639540988

C.F./R.I. 01581570171

REA 248813 BS

C.S. 802.165,00 €

Contacts

+39 030 831096

+39 030 8913312

offerte@gambamacchine.it

Where we are

Headquarter and Warehouse 1

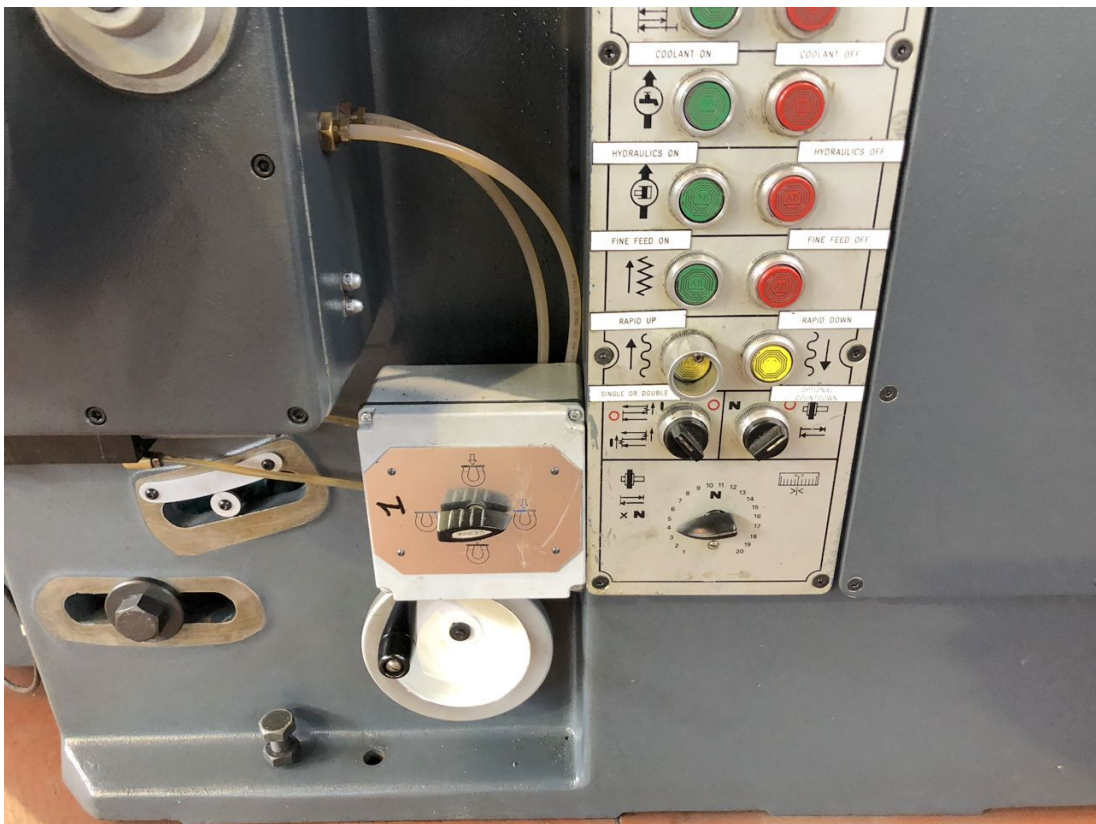
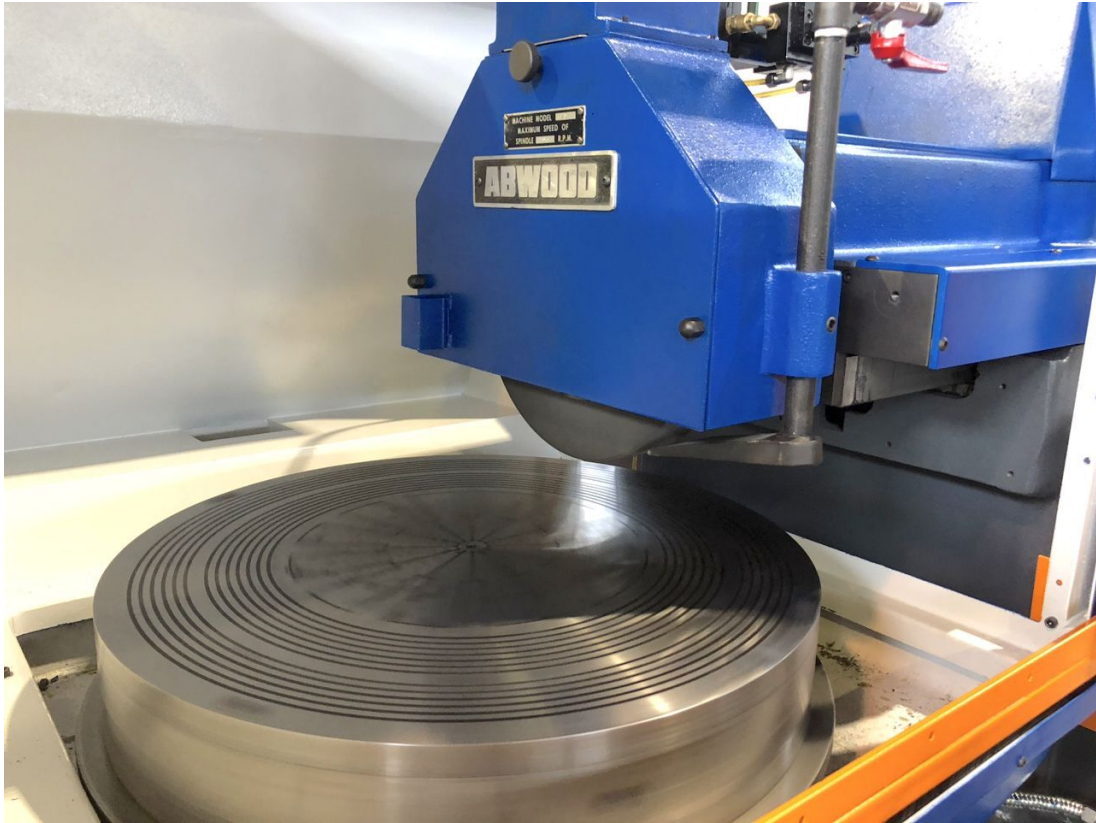
Via Artigiani, 32 - 25063

Gardone V.T. Brescia - Italia

Warehouse 2

Via Caduti del lavoro 41, 25030

Coccaglio Brescia - Italia



Gamba Macchine Srl

V.A.T. IT00639540988

C.F./R.I. 01581570171

REA 248813 BS

C.S. 802.165,00 €

Contacts

+39 030 831096

+39 030 8913312

offerte@gambamacchine.it

Where we are

Headquarter and Warehouse 1

Via Artigiani, 32 - 25063

Gardone V.T. Brescia - Italia

Warehouse 2

Via Caduti del lavoro 41, 25030

Coccaglio Brescia - Italia



Gamba Macchine Srl

Contacts

Where we are

V.A.T. IT00639540988

+39 030 831096

Headquarter and Warehouse 1

Warehouse 2

C.F./R.I. 01581570171

+39 030 8913312

Via Artigiani, 32 - 25063

Via Caduti del lavoro 41, 25030

REA 248813 BS

offerte@gambamacchine.it

Gardone V.T. Brescia - Italia

Coccaglio Brescia - Italia

C.S. 802.165,00 €



Gamba Macchine Srl

Contacts

Where we are

V.A.T. IT00639540988

+39 030 831096

Headquarter and Warehouse 1

Warehouse 2

C.F./R.I. 01581570171

+39 030 8913312

Via Artigiani, 32 - 25063

Via Caduti del lavoro 41, 25030

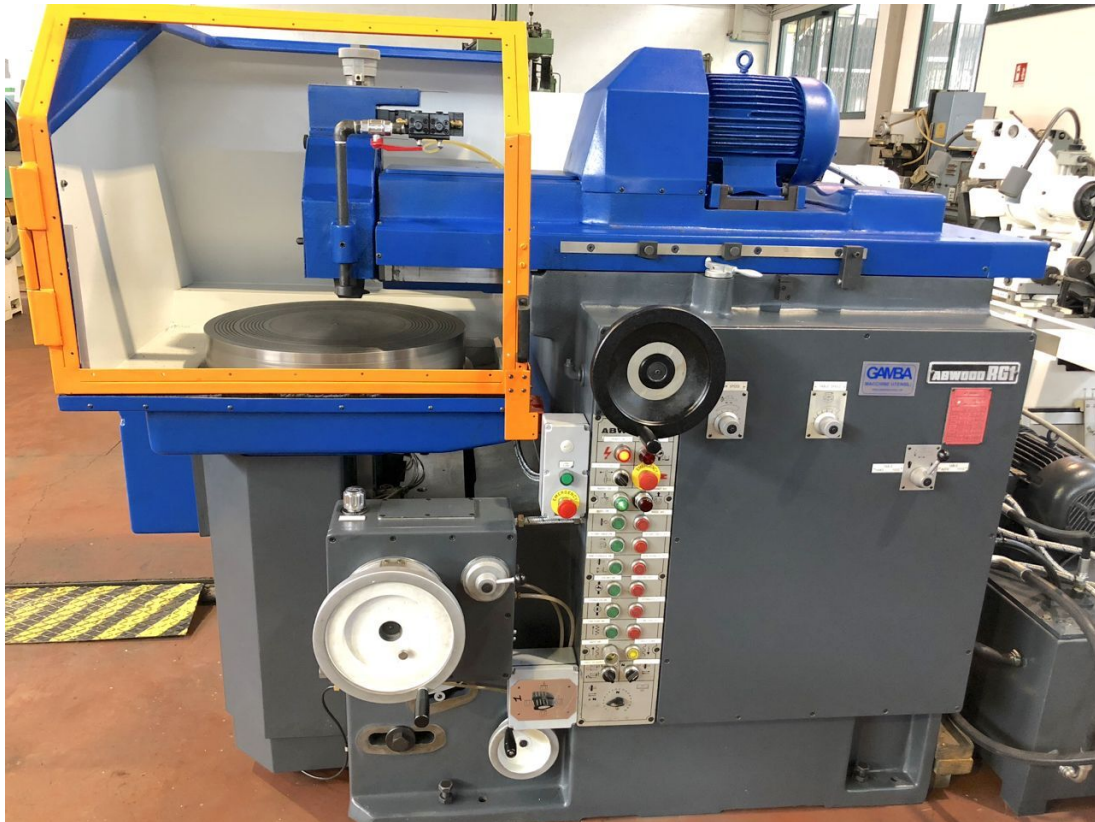
REA 248813 BS

offerte@gambamacchine.it

Gardone V.T. Brescia - Italia

Coccaglio Brescia - Italia

C.S. 802.165,00 €



Gamba Macchine Srl

V.A.T. IT00639540988

C.F./R.I. 01581570171

REA 248813 BS

C.S. 802.165,00 €

Contacts

+39 030 831096

+39 030 8913312

offerte@gambamacchine.it

Where we are

Headquarter and Warehouse 1

Via Artigiani, 32 - 25063

Gardone V.T. Brescia - Italia

Warehouse 2

Via Caduti del lavoro 41, 25030

Coccaglio Brescia - Italia