

# FPT AREA M80

**Category** Milling machine

**Made** FPT

**Type** mobile column

**Model** AREA M80

**Capacity** 8000x3000x1250 mm



## Technical specifications

### Gamba Macchine Srl

V.A.T. IT00639540988

C.F./R.I. 01581570171

REA 248813 BS

C.S. 802.165,00 €

### Contacts

+39 030 831096

+39 030 8913312

offerte@gambamacchine.it

### Where we are

#### Headquarter and Warehouse 1

Via Artigiani, 32 - 25063

Gardone V.T. Brescia - Italia

#### Warehouse 2

Via Caduti del lavoro 41, 25030

Coccaglio Brescia - Italia

<p><b>WORKING CAPACITY</b></p>	<p><b>CNC</b></p>	<p><b>SPINDLE</b></p>
<p><b>Longitudinal (X)</b> 8000 mm <b>Vertical (Y)</b> 3000 mm <b>Cross RAM (Z)</b> 1250 mm <b>Axes support</b> Idrostatico</p>	<p><b>CNC</b> Heidenhain iTNC530 + HR410 <b>Drives</b> SIEMENS <b>Measuring system</b> Righe ottiche Heidenhain</p>	<p><b>Spindle power</b> 46/37 Kw <b>Rotating speed</b> 5000 Rpm <b>Torque</b> 1691-2045 Nm <b>Taper</b> ISO50 <b>RAM section</b> 500x430 mm</p>
<p><b>FEEDS</b></p>	<p><b>ATC</b></p>	<p><b>TABLE 1</b></p>
<p><b>Rapid X</b> 25 m/min <b>Rapid Y</b> 25 m/min <b>Rapid Z</b> 25 m/min</p>	<p><b>Positions</b> 40 <b>Max tool diameter</b> 125 mm <b>Max diam with free adjacent space</b> 230 mm <b>Max tool length</b> 400 mm <b>Tool taper</b> ISO50</p>	<p><b>Surface</b> 2000x2000 mm <b>Accuracy (B axis)</b> 360.000x0,001° <b>Capacity</b> 15.000 Kg <b>Notes</b> FPT TRF15</p>
<p><b>HEAD 1</b></p>	<p><b>HEAD 2</b></p>	<p><b>FIXING TABLE</b></p>
<p><b>Type</b> FPT TUPC <b>Spindle taper</b> ISO50 <b>A axis</b> 360.000x0,001° <b>C axis</b> 360.000x0,001° <b>Max torque</b> 1210 Nm <b>Max speed</b> 5000 Rpm <b>Max power</b> 46/37 Kw <b>Coolant</b> interno 20 Bar</p>	<p><b>Max speed</b> 5000 Rpm <b>Max power</b> 46 Kw</p>	<p><b>Quantity</b> 2 <b>Floorspace (LxWxH)</b> 4900x3750 + 1400x3750 mm</p>
<p><b>PICK UP STATION FOR HEADS</b></p>		<p><b>High Pressure</b> 20bar <b>Chiller</b> Si <b>Chip conveyor</b> Si <b>Maintenance &amp; Use books</b> Yes <b>CE Certification</b> Yes <b>Electrical drawings</b> Yes <b>Floorspace</b> 14000x7655(con piani profondi 3750mm)x5389 mm <b>Tooling included</b> testa FPT TUPCG5, prolunga SELS6 600mm, 1 piano 1400x3750, 1 piano 4900x3750</p>
<p><b>Positions</b> 2</p>		

**Gamba Macchine Srl**

**V.A.T.** IT00639540988

**C.F./R.I.** 01581570171

**REA** 248813 BS

**C.S.** 802.165,00 €

**Contacts**

+39 030 831096

+39 030 8913312

offerte@gambamacchine.it

**Where we are**

**Headquarter and Warehouse 1**

Via Artigiani, 32 - 25063

Gardone V.T. Brescia - Italia

**Warehouse 2**

Via Caduti del lavoro 41, 25030

Coccaglio Brescia - Italia



**Gamba Macchine Srl**

V.A.T. IT00639540988

C.F./R.I. 01581570171

REA 248813 BS

C.S. 802.165,00 €

**Contacts**

+39 030 831096

+39 030 8913312

offerte@gambamacchine.it

**Where we are**

**Headquarter and Warehouse 1**

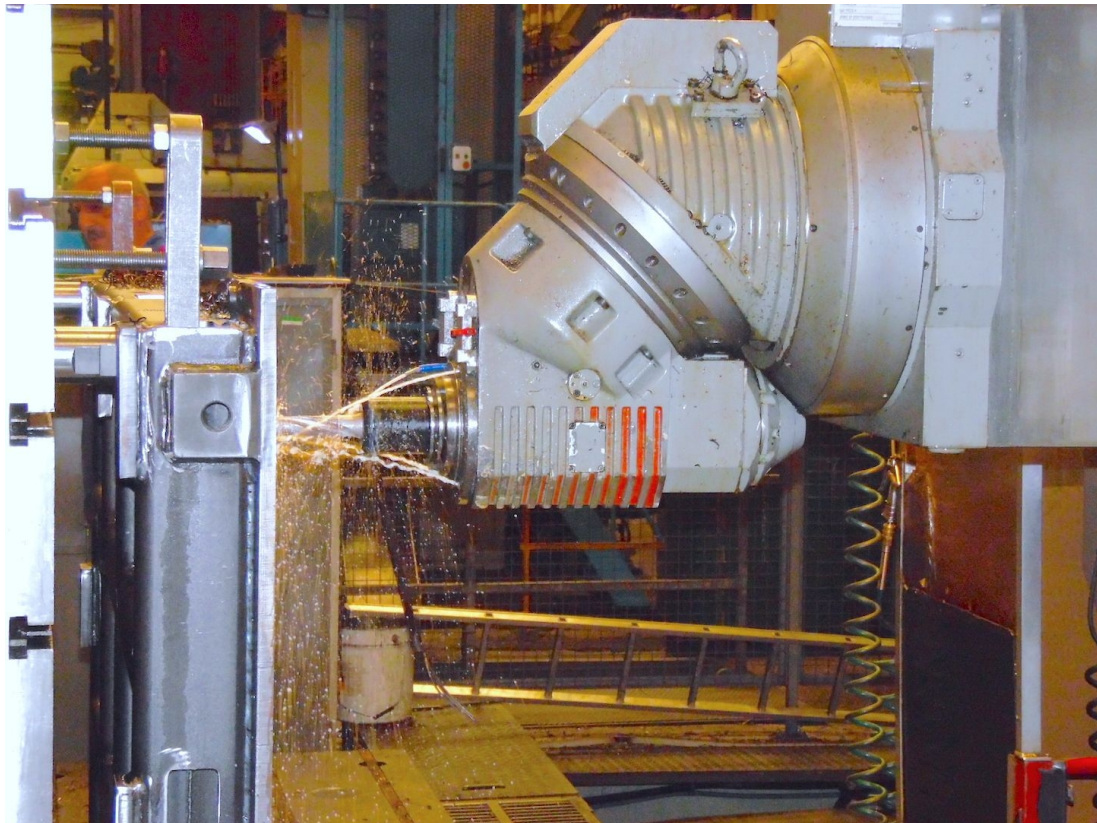
Via Artigiani, 32 - 25063

Gardone V.T. Brescia - Italia

**Warehouse 2**

Via Caduti del lavoro 41, 25030

Coccaglio Brescia - Italia



**Gamba Macchine Srl**

**Contacts**

**Where we are**

V.A.T. IT00639540988

+39 030 831096

**Headquarter and Warehouse 1**

**Warehouse 2**

C.F./R.I. 01581570171

+39 030 8913312

Via Artigiani, 32 - 25063

Via Caduti del lavoro 41, 25030

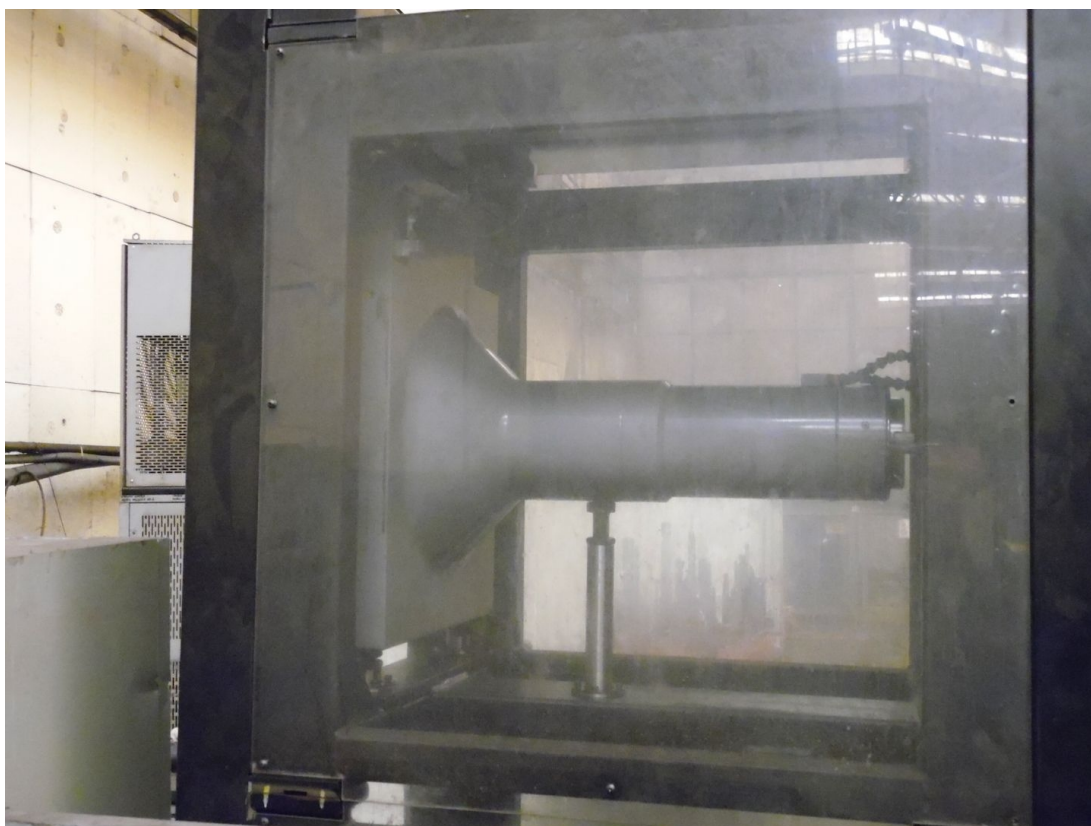
REA 248813 BS

offerte@gambamacchine.it

Gardone V.T. Brescia - Italia

Coccaglio Brescia - Italia

C.S. 802.165,00 €



**Gamba Macchine Srl**

**Contacts**

**Where we are**

**V.A.T.** IT00639540988

+39 030 831096

**C.F./R.I.** 01581570171

+39 030 8913312

**REA** 248813 BS

offerte@gambamacchine.it

**C.S.** 802.165,00 €

**Headquarter and Warehouse 1**

Via Artigiani, 32 - 25063

Gardone V.T. Brescia - Italia

**Warehouse 2**

Via Caduti del lavoro 41, 25030

Coccaglio Brescia - Italia



**Gamba Macchine Srl**

**Contacts**

**Where we are**

V.A.T. IT00639540988

+39 030 831096

**Headquarter and Warehouse 1**

**Warehouse 2**

C.F./R.I. 01581570171

+39 030 8913312

Via Artigiani, 32 - 25063

Via Caduti del lavoro 41, 25030

REA 248813 BS

offerte@gambamacchine.it

Gardone V.T. Brescia - Italia

Coccaglio Brescia - Italia

C.S. 802.165,00 €



**Gamba Macchine Srl**

**Contacts**

**Where we are**

V.A.T. IT00639540988

+39 030 831096

C.F./R.I. 01581570171

+39 030 8913312

REA 248813 BS

offerte@gambamacchine.it

C.S. 802.165,00 €

**Headquarter and Warehouse 1**

Via Artigiani, 32 - 25063

Gardone V.T. Brescia - Italia

**Warehouse 2**

Via Caduti del lavoro 41, 25030

Coccaglio Brescia - Italia



**Gamba Macchine Srl**

**V.A.T.** IT00639540988

**C.F./R.I.** 01581570171

**REA** 248813 BS

**C.S.** 802.165,00 €

**Contacts**

+39 030 831096

+39 030 8913312

[offerte@gambamacchine.it](mailto:offerte@gambamacchine.it)

**Where we are**

**Headquarter and Warehouse 1**

Via Artigiani, 32 - 25063

Gardone V.T. Brescia - Italia

**Warehouse 2**

Via Caduti del lavoro 41, 25030

Coccaglio Brescia - Italia