

SACHMAN TRT22

Category Milling machine

Type T type

Made SACHMAN

Model TRT22

Capacity 2500x1500x1400 mm



Technical specifications

Gamba Macchine Srl

V.A.T. IT00639540988

C.F./R.I. 01581570171

REA 248813 BS

C.S. 802.165,00 €

Contacts

+39 030 831096

+39 030 8913312

offerte@gambamacchine.it

Where we are

Headquarter and Warehouse 1

Via Artigiani, 32 - 25063

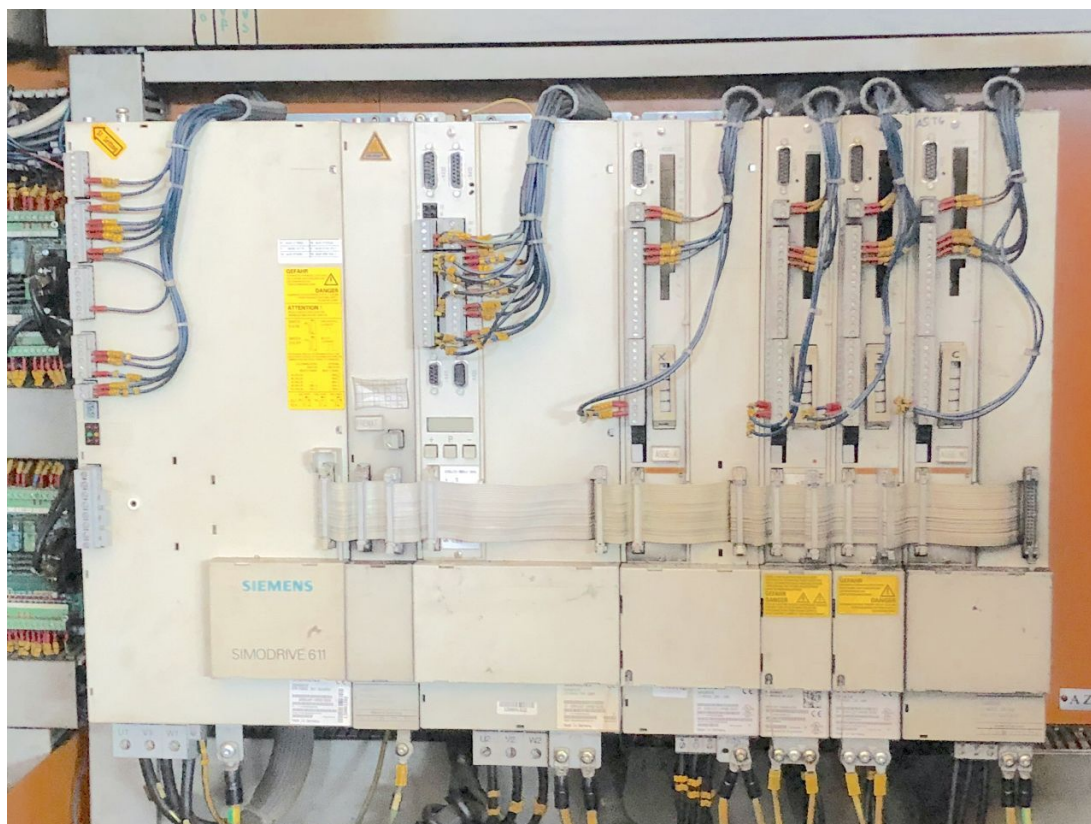
Gardone V.T. Brescia - Italia

Warehouse 2

Via Caduti del lavoro 41, 25030

Coccaglio Brescia - Italia

<p>WORKING CAPACITY</p> <p>Longitudinal (X) 2500 mm Vertical (Y) 1500 mm Cross column (Z) 1400 mm</p>	<p>CNC</p> <p>CNC FIDIA</p>	<p>SPINDLE</p> <p>Spindle power 24 Kw Rotating speed 4000 Rpm Taper ISO50</p>
<p>ATC</p> <p>Positions ATC12 Tool taper ISO50 Max tool diameter 130 mm Max diam with free adjacent space 250 mm Max tool length 250 mm Max tool weight 20 Kg</p>	<p>TABLE 1</p> <p>Surface 2000x1600 mm Accuracy (B axis) 0,001° Capacity 10.000 Kg Rotating speed 3Rpm o°/min</p>	<p>HEAD 1</p> <p>Type KOSMO4000 Spindle taper ISO50 A axis 144x2,5° C axis 120x3° Max speed 4000 Rpm Max power 24 Kw</p>
<p>FEEDS</p> <p>Rapid X 12 m/min Rapid Y 12 m/min Rapid Z 12 m/min X 10 m/min Y 10 m/min Z 10 m/min Rapid B 3 Rpm</p>	<p>Chip conveyor si Housing protezione area di lavoro CE Certification Yes Machine total weight 24300 Kg</p>	



Gamba Macchine Srl

Contacts

Where we are

V.A.T. IT00639540988

+39 030 831096

Headquarter and Warehouse 1

Warehouse 2

C.F./R.I. 01581570171

+39 030 8913312

Via Artigiani, 32 - 25063

Via Caduti del lavoro 41, 25030

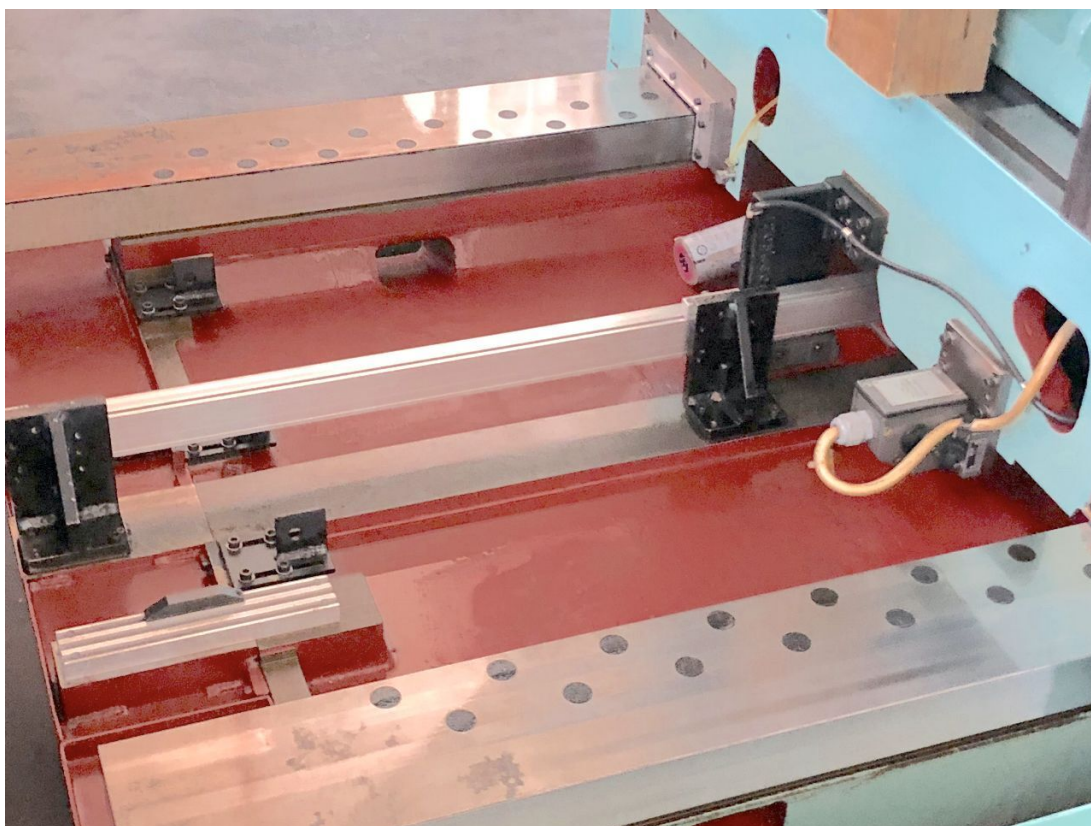
REA 248813 BS

offerte@gambamacchine.it

Gardone V.T. Brescia - Italia

Coccaglio Brescia - Italia

C.S. 802.165,00 €



Gamba Macchine Srl

Contacts

Where we are

V.A.T. IT00639540988

+39 030 831096

Headquarter and Warehouse 1

Warehouse 2

C.F./R.I. 01581570171

+39 030 8913312

Via Artigiani, 32 - 25063

Via Caduti del lavoro 41, 25030

REA 248813 BS

offerte@gambamacchine.it

Gardone V.T. Brescia - Italia

Coccaglio Brescia - Italia

C.S. 802.165,00 €



Gamba Macchine Srl

Contacts

Where we are

V.A.T. IT00639540988

+39 030 831096

Headquarter and Warehouse 1

Warehouse 2

C.F./R.I. 01581570171

+39 030 8913312

Via Artigiani, 32 - 25063

Via Caduti del lavoro 41, 25030

REA 248813 BS

offerte@gambamacchine.it

Gardone V.T. Brescia - Italia

Coccaglio Brescia - Italia

C.S. 802.165,00 €



Gamba Macchine Srl

Contacts

Where we are

V.A.T. IT00639540988

+39 030 831096

Headquarter and Warehouse 1

Warehouse 2

C.F./R.I. 01581570171

+39 030 8913312

Via Artigiani, 32 - 25063

Via Caduti del lavoro 41, 25030

REA 248813 BS

offerte@gambamacchine.it

Gardone V.T. Brescia - Italia

Coccaglio Brescia - Italia

C.S. 802.165,00 €