

# DORRIES CT320 CNC

**Category** Turning Machine

**Made** DORRIES

**Type** Vertical

**Model** CT320 CNC

**Capacity** ø4080x2600 mm



## Technical specifications

<p><b>WORKING CAPACITY</b></p>	<p><b>CNC</b></p>	<p><b>MAIN SPINDLE</b></p>
<p><b>Platform diameter</b> 3200 mm  <b>Max workpiece diameter</b> 4080 mm  <b>Max turning height</b> 2600 mm  <b>Max workpiece weight</b> 10 Rpm: 135.000Kg / 80Rpm: 60.000Kg / 120 Rpm: 50.000 Kg</p>	<p><b>CNC</b> SIEMENS 840DSL  <b>Measuring system</b> Heidenhain linear scale - Righe ottiche  <b>Drives</b> Siemens  <b>Notes</b> 100% retrofitted by DORRIES</p>	<p><b>Platform diameter</b> 3200 mm  <b>Platform type</b> 4 griffe  <b>Max rotation speed</b> 0,5-120 rpm  <b>Capacity</b> 10 Rpm: 135.000Kg / 80Rpm: 60.000Kg / 120 Rpm: 50.000 Kg  <b>Max power</b> 74 Kw  <b>Max torque</b> 90000 Nm</p>
<p><b>CROSSRAIL</b></p>	<p><b>CARRIAGE</b></p>	<p><b>Double column</b> Yes  <b>Mobile traverse</b> Yes  <b>Maintenance &amp; Use books</b> Yes  <b>Electrical drawings</b> Yes  <b>Protections</b> perimetrali tavola  <b>Availability</b> Pronta  <b>Available under power</b> Si</p>
<p><b>Vertical stroke (W)</b> 2250 mm  <b>Rapid feeds (W)</b> 3 m/min</p>	<p><b>Vertical stroke (Z)</b> 1500 mm  <b>Cross stroke (X)</b> 2480 mm  <b>Tool taper</b> CAPTO C8  <b>Rapid feeds (Z)</b> 3 m/min  <b>Rapid feeds (X)</b> 3 m/min  <b>RAM section</b> 280x280 mm</p>	<p><b>Relevant updates made on the machine</b> Revisione meccanica completa del costruttore nel 2009, Retrofitting 100% (nuovo CNC SIEMENS 840DSL, motori assi, motore mandrino, azionamenti, armadi elettrici, condizionatori, componentistica ecc... tutto</p>

**Gamba Macchine Srl**

**Contacts**

**Where we are**

V.A.T. IT00639540988

+39 030 831096

**Headquarter and Warehouse 1**

**Warehouse 2**

C.F./R.I. 01581570171

+39 030 8913312

Via Artigiani, 32 - 25063

Via Caduti del lavoro 41, 25030

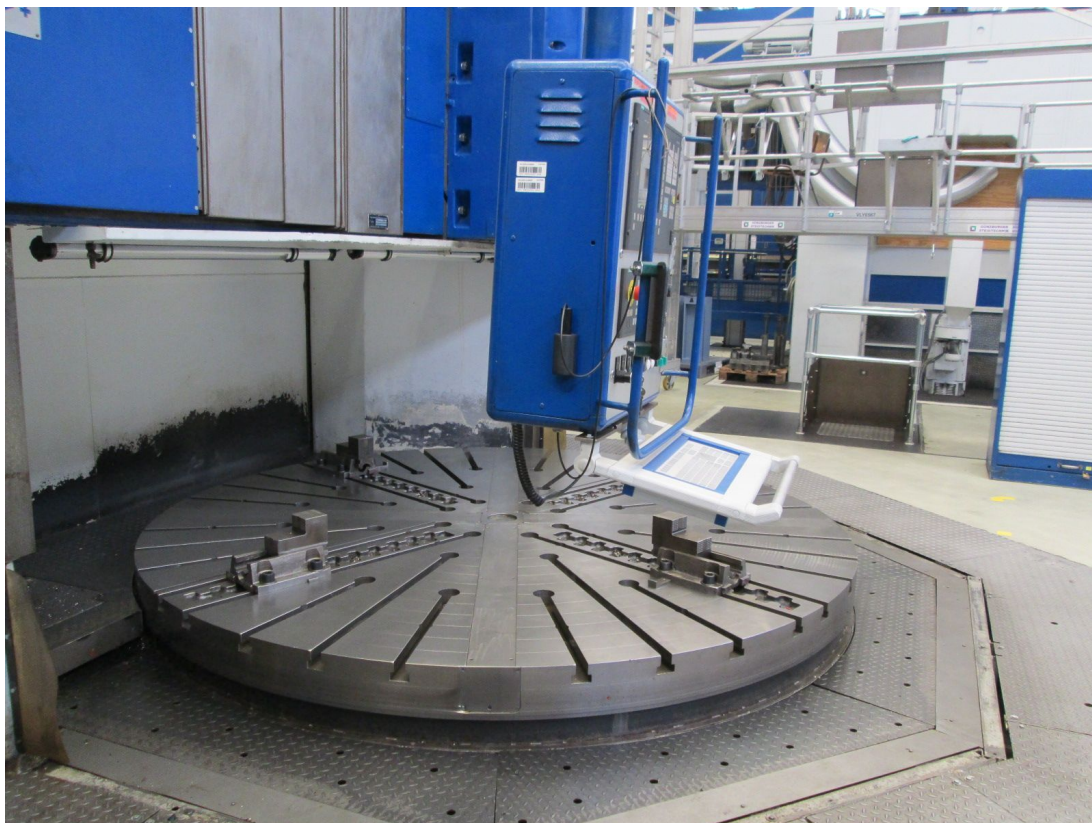
REA 248813 BS

offerte@gambamacchine.it

Gardone V.T. Brescia - Italia

Coccaglio Brescia - Italia

C.S. 802.165,00 €



**Gamba Macchine Srl**

**Contacts**

**Where we are**

**V.A.T.** IT00639540988

+39 030 831096

**Headquarter and Warehouse 1**

**Warehouse 2**

**C.F./R.I.** 01581570171

+39 030 8913312

Via Artigiani, 32 - 25063

Via Caduti del lavoro 41, 25030

**REA** 248813 BS

offerte@gambamacchine.it

Gardone V.T. Brescia - Italia

Coccaglio Brescia - Italia

**C.S.** 802.165,00 €



**Gamba Macchine Srl**

**Contacts**

**Where we are**

**V.A.T.** IT00639540988

+39 030 831096

**Headquarter and Warehouse 1**

**Warehouse 2**

**C.F./R.I.** 01581570171

+39 030 8913312

Via Artigiani, 32 - 25063

Via Caduti del lavoro 41, 25030

**REA** 248813BS

offerte@gambamacchine.it

Gardone V.T. Brescia - Italia

Coccaglio Brescia - Italia

**C.S.** 802.165,00 €



**Gamba Macchine Srl**

**Contacts**

**Where we are**

V.A.T. IT00639540988

+39 030 831096

**Headquarter and Warehouse 1**

**Warehouse 2**

C.F./R.I. 01581570171

+39 030 8913312

Via Artigiani, 32 - 25063

Via Caduti del lavoro 41, 25030

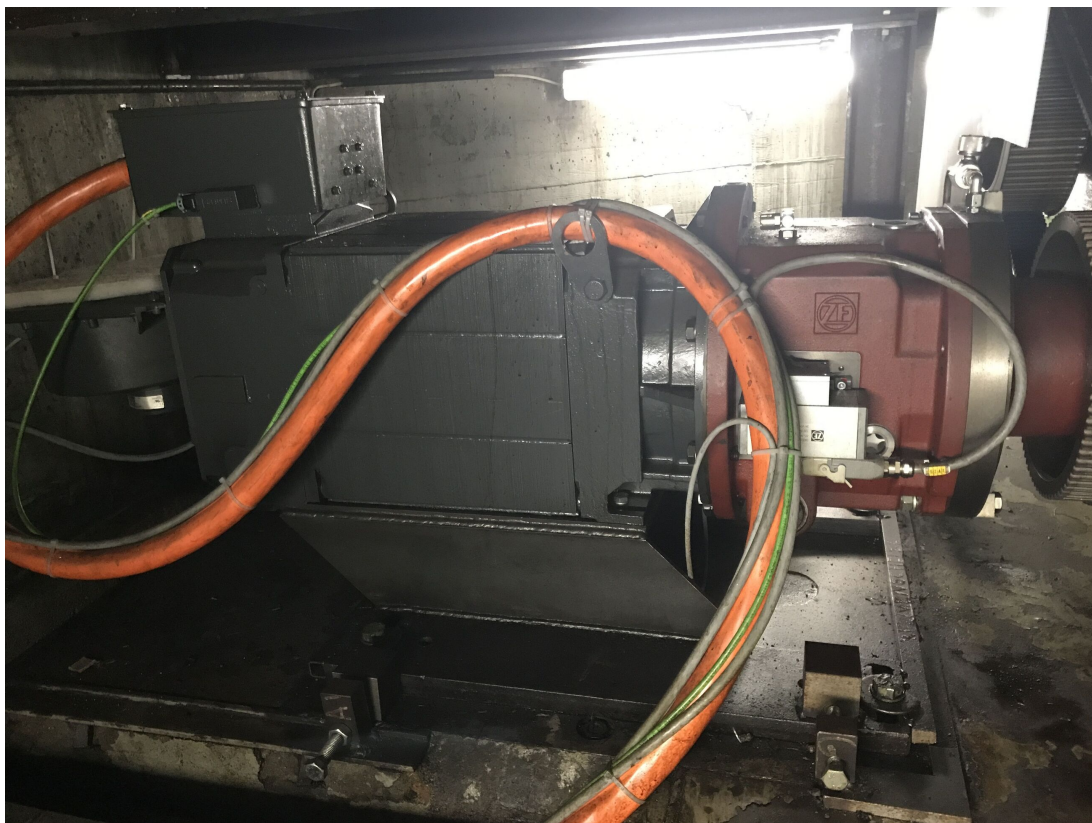
REA 248813 BS

offerte@gambamacchine.it

Gardone V.T. Brescia - Italia

Coccaglio Brescia - Italia

C.S. 802.165,00 €



**Gamba Macchine Srl**

V.A.T. IT00639540988

C.F./R.I. 01581570171

REA 248813 BS

C.S. 802.165,00 €

**Contacts**

+39 030 831096

+39 030 8913312

offerte@gambamacchine.it

**Where we are**

**Headquarter and Warehouse 1**

Via Artigiani, 32 - 25063

Gardone V.T. Brescia - Italia

**Warehouse 2**

Via Caduti del lavoro 41, 25030

Coccaglio Brescia - Italia



**Gamba Macchine Srl**

**Contacts**

**Where we are**

V.A.T. IT00639540988

+39 030 831096

**Headquarter and Warehouse 1**

**Warehouse 2**

C.F./R.I. 01581570171

+39 030 8913312

Via Artigiani, 32 - 25063

Via Caduti del lavoro 41, 25030

REA 248813 BS

offerte@gambamacchine.it

Gardone V.T. Brescia - Italia

Coccaglio Brescia - Italia

C.S. 802.165,00 €



**Gamba Macchine Srl**

**V.A.T.** IT00639540988

**C.F./R.I.** 01581570171

**REA** 248813 BS

**C.S.** 802.165,00 €

**Contacts**

+39 030 831096

+39 030 8913312

[offerte@gambamacchine.it](mailto:offerte@gambamacchine.it)

**Where we are**

**Headquarter and Warehouse 1**

Via Artigiani, 32 - 25063

Gardone V.T. Brescia - Italia

**Warehouse 2**

Via Caduti del lavoro 41, 25030

Coccaglio Brescia - Italia