

JONES & SHIPMAN 1400

Category Grinding Machine

Type Surface

Made JONES & SHIPMAN

Model 1400



Technical specifications

WORKING CAPACITY

Longitudinal (X) 635 mm
Vertical (Z) 279 mm
Cross Table (Y) 203 mm
Spindle nose axis - table distance 83-360 mm

WHEEL SPINDLE

Spindle power 1,5 Kw
Rotating speed 2570 Rpm
Support cuscinetti

TABLE

Surface 610x178 mm
Stroke 635 mm
Cross speed 3-21m/min

WHEEL

Wheel band thickness 20 mm
Max wheel diameter 200 mm
Hole diameter 31,75 mm

FEEDS

Automatic Vertical 0,001-0,006 mm/min
Cross 0,178-1,78 mm/min

Total power supply 3 Kw
Machine total weight 1633 Kg
Floor space 2350x1054x1657 mm
Tooling included Piano magnetico
Availability pronta
Available in stock si

Gamba Macchine Srl

V.A.T. IT00639540988

C.F./R.I. 01581570171

REA 248813 BS

C.S. 802.165,00 €

Contacts

+39 030 831096

+39 030 8913312

offerte@gambamacchine.it

Where we are

Headquarter and Warehouse 1

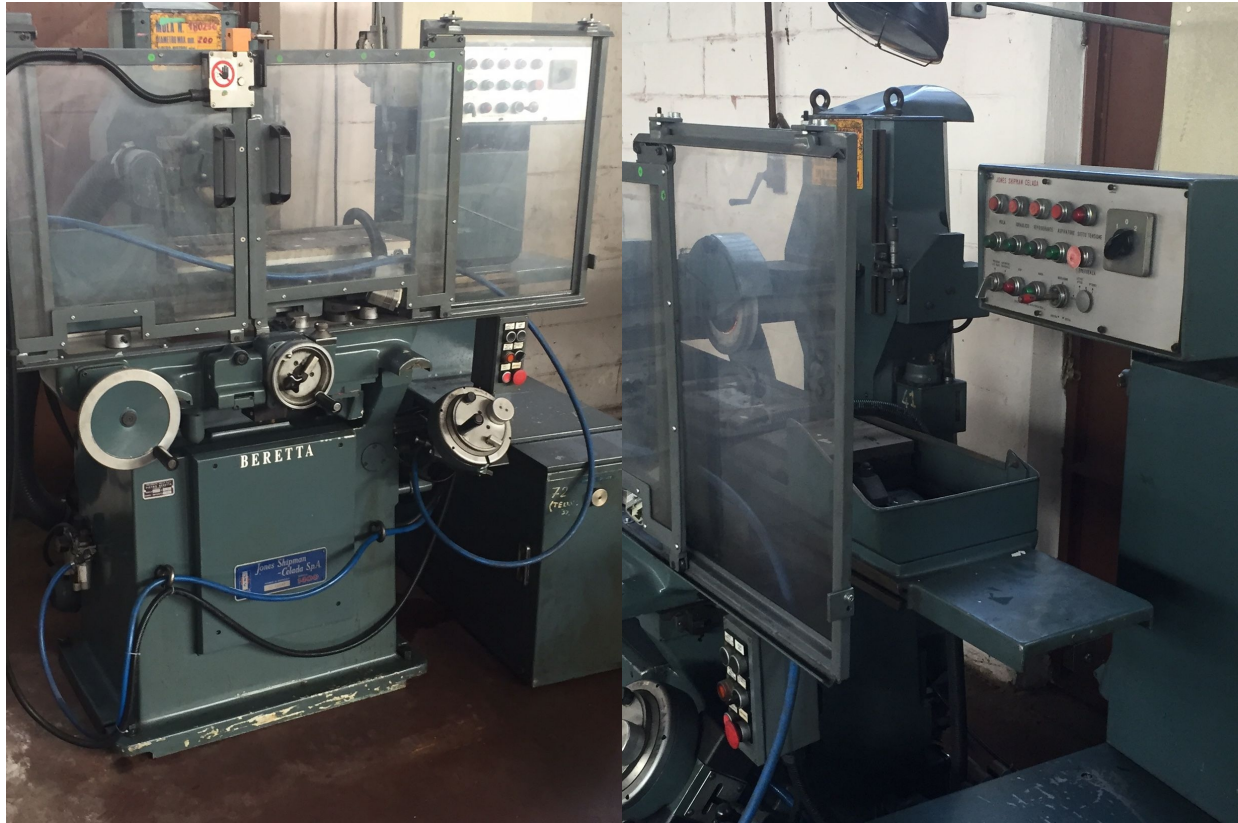
Via Artigiani, 32 - 25063

Gardone V.T. Brescia - Italia

Warehouse 2

Via Caduti del lavoro 41, 25030

Coccaglio Brescia - Italia



Gamba Macchine Srl

Contacts

Where we are

V.A.T. IT00639540988

+39 030 831096

Headquarter and Warehouse 1

Warehouse 2

C.F./R.I. 01581570171

+39 030 8913312

Via Artigiani, 32 - 25063

Via Caduti del lavoro 41, 25030

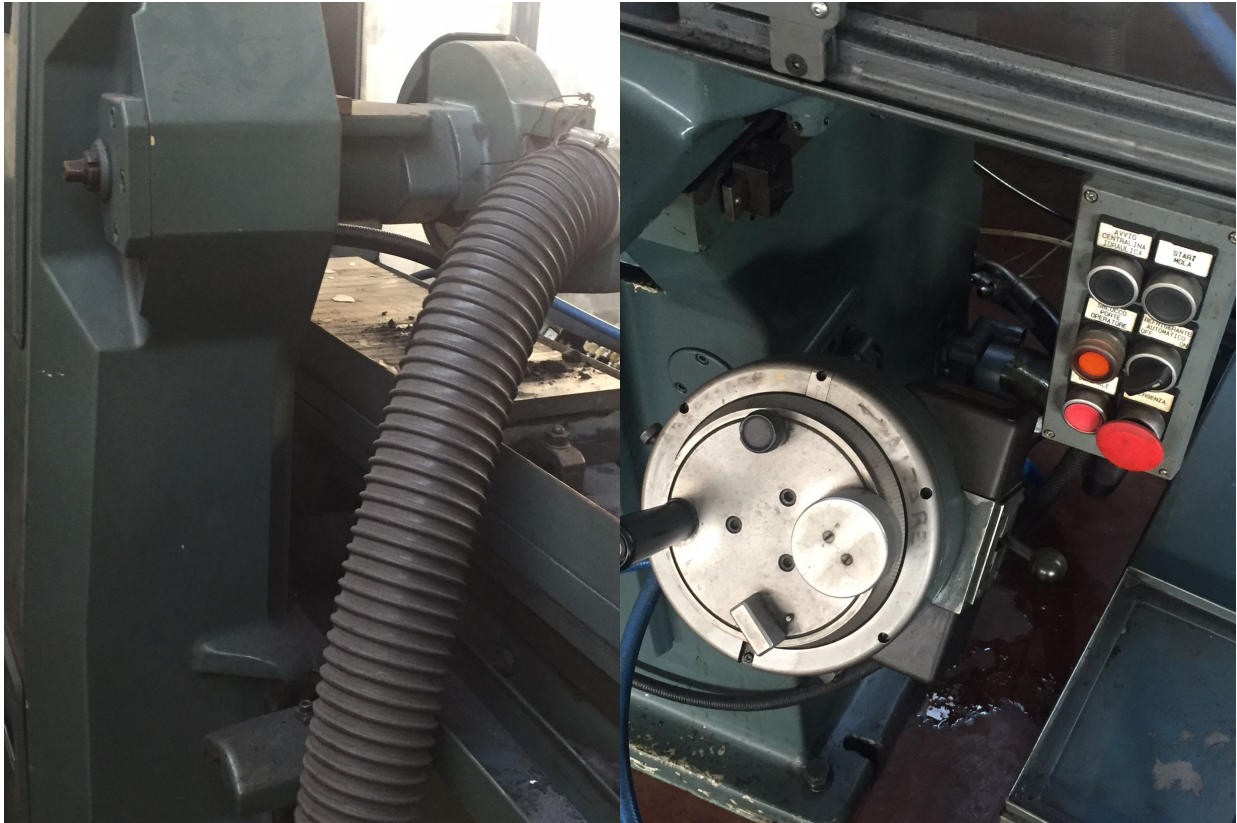
REA 248813BS

offerte@gambamacchine.it

Gardone V.T. Brescia - Italia

Coccaglio Brescia - Italia

C.S. 802.165,00 €



Gamba Macchine Srl

V.A.T. IT00639540988

C.F./R.I. 01581570171

REA 248813 BS

C.S. 802.165,00 €

Contacts

+39 030 831096

+39 030 8913312

offerte@gambamacchine.it

Where we are

Headquarter and Warehouse 1

Via Artigiani, 32 - 25063

Gardone V.T. Brescia - Italia

Warehouse 2

Via Caduti del lavoro 41, 25030

Coccaglio Brescia - Italia