

# KITAMURA HX 400i

**Category** Machining Centre

**Type** Horizontal

**Made** KITAMURA

**Model** HX 400i

**Capacity** 660x560x610 mm



## Technical specifications

### Gamba Macchine Srl

V.A.T. IT00639540988

C.F./R.I. 01581570171

REA 248813 BS

C.S. 802.165,00 €

### Contacts

+39 030 831096

+39 030 8913312

offerte@gambamacchine.it

### Where we are

#### Headquarter and Warehouse 1

Via Artigiani, 32 - 25063

Gardone V.T. Brescia - Italia

#### Warehouse 2

Via Caduti del lavoro 41, 25030

Coccaglio Brescia - Italia

<p><b>WORKING CAPACITY</b></p>	<p><b>CNC</b></p>	<p><b>SPINDLE</b></p>
<p><b>Longitudinal (X)</b> 660 mm  <b>Vertical (Z)</b> 560 mm  <b>Cross (Y)</b> 610 mm  <b>Table (B)</b> 0,001°  <b>Axes support</b> guide piane</p>	<p><b>CNC</b> Fanuc 16iM</p>	<p><b>Spindle power</b> 15-18,5 Kw  <b>Rotating speed</b> 35-13.000 Rpm  <b>Taper</b> ISO40  <b>Spindle transmission</b> direct drive  <b>Gearbox</b> meccanico  <b>Internal coolant</b> si Bar</p>
<p><b>FEEDS</b></p>	<p><b>AUTO PALLET CHANGER (APC)</b></p>	<p><b>TABLE</b></p>
<p><b>Rapid X</b> 50 m/min  <b>Rapid Y</b> 50 m/min  <b>Rapid Z</b> 50 m/min  <b>Rapid B</b> 40 Rpm  <b>Notes</b> doppie viti forate e refrigerate con doppi motori su tutti gli assi</p>	<p><b>Pallet number</b> 2  <b>Pallet surface</b> 400x400 mm  <b>Capacity</b> 500 Kg</p>	<p><b>Floorspace (LxWxH)</b> 400x400 mm  <b>Capacity</b> 500 Kg  <b>Accuracy (B axis)</b> 0,001°</p>
<p><b>ATC</b></p>	<p><b>Machine total weight</b> 16.000 Kg  <b>Floor space</b> 4600x2450x3300 mm  <b>Filtration unit</b> convogliatore truciolo dual deck  <b>Maintenance &amp; Use books</b> Yes  <b>Electrical drawings</b> Yes  <b>CE Certification</b> Yes  <b>Housing</b> integrale  <b>Availability</b> pronta</p>	
<p><b>Positions</b> 50  <b>Max tool diameter</b> 95 mm  <b>Max diam with free adjacent space</b> 150 mm  <b>Max tool lenght</b> 360 mm  <b>Max tool weight</b> 10 Kg  <b>Tool taper</b> ISO50  <b>Tool changing time</b> 1 sec.</p>		

**Gamba Macchine Srl**

**V.A.T.** IT00639540988

**C.F./R.I.** 01581570171

**REA** 248813 BS

**C.S.** 802.165,00 €

**Contacts**

+39 030 831096

+39 030 8913312

offerte@gambamacchine.it

**Where we are**

**Headquarter and Warehouse 1**

Via Artigiani, 32 - 25063

Gardone V.T. Brescia - Italia

**Warehouse 2**

Via Caduti del lavoro 41, 25030

Coccaglio Brescia - Italia



**Gamba Macchine Srl**

**Contacts**

**Where we are**

V.A.T. IT00639540988

+39 030 831096

**Headquarter and Warehouse 1**

**Warehouse 2**

C.F./R.I. 01581570171

+39 030 8913312

Via Artigiani, 32 - 25063

Via Caduti del lavoro 41, 25030

REA 248813 BS

offerte@gambamacchine.it

Gardone V.T. Brescia - Italia

Coccaglio Brescia - Italia

C.S. 802.165,00 €



**Gamba Macchine Srl**

**Contacts**

**Where we are**

V.A.T. IT00639540988

+39 030 831096

**Headquarter and Warehouse 1**

**Warehouse 2**

C.F./R.I. 01581570171

+39 030 8913312

Via Artigiani, 32 - 25063

Via Caduti del lavoro 41, 25030

REA 248813 BS

offerte@gambamacchine.it

Gardone V.T. Brescia - Italia

Coccaglio Brescia - Italia

C.S. 802.165,00 €



**Gamba Macchine Srl**

**Contacts**

**Where we are**

V.A.T. IT00639540988

+39 030 831096

**Headquarter and Warehouse 1**

**Warehouse 2**

C.F./R.I. 01581570171

+39 030 8913312

Via Artigiani, 32 - 25063

Via Caduti del lavoro 41, 25030

REA 248813 BS

offerte@gambamacchine.it

Gardone V.T. Brescia - Italia

Coccaglio Brescia - Italia

C.S. 802.165,00 €



**Gamba Macchine Srl**

**Contacts**

**Where we are**

V.A.T. IT00639540988

+39 030 831096

C.F./R.I. 01581570171

+39 030 8913312

REA 248813 BS

offerte@gambamacchine.it

C.S. 802.165,00 €

**Headquarter and Warehouse 1**

Via Artigiani, 32 - 25063

Gardone V.T. Brescia - Italia

**Warehouse 2**

Via Caduti del lavoro 41, 25030

Coccaglio Brescia - Italia



**Gamba Macchine Srl**

V.A.T. IT00639540988

C.F./R.I. 01581570171

REA 248813 BS

C.S. 802.165,00 €

**Contacts**

+39 030 831096

+39 030 8913312

offerte@gambamacchine.it

**Where we are**

**Headquarter and Warehouse 1**

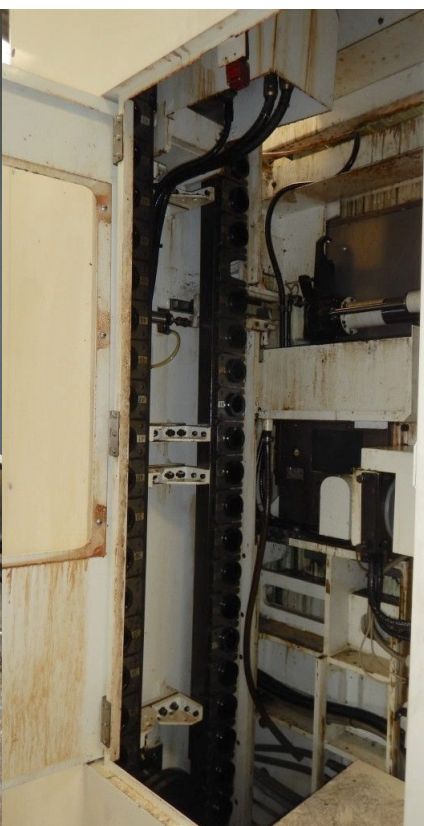
Via Artigiani, 32 - 25063

Gardone V.T. Brescia - Italia

**Warehouse 2**

Via Caduti del lavoro 41, 25030

Coccaglio Brescia - Italia



**Gamba Macchine Srl**

**Contacts**

**Where we are**

V.A.T. IT00639540988

+39 030 831096

**Headquarter and Warehouse 1**

**Warehouse 2**

C.F./R.I. 01581570171

+39 030 8913312

Via Artigiani, 32 - 25063

Via Caduti del lavoro 41, 25030

REA 248813 BS

offerte@gambamacchine.it

Gardone V.T. Brescia - Italia

Coccaglio Brescia - Italia

C.S. 802.165,00 €