

SIG B16

Category Drilling machine
Type Deep-hole drilling

Made SIG
Model B16



Gamba Macchine Srl

Contacts

Where we are

V.A.T. IT00639540988

+39 030 831096

C.F./R.I. 01581570171

+39 030 8913312

REA 248813 BS

offerte@gambamacchine.it

C.S. 802.165,00 €

Headquarter and Warehouse 1

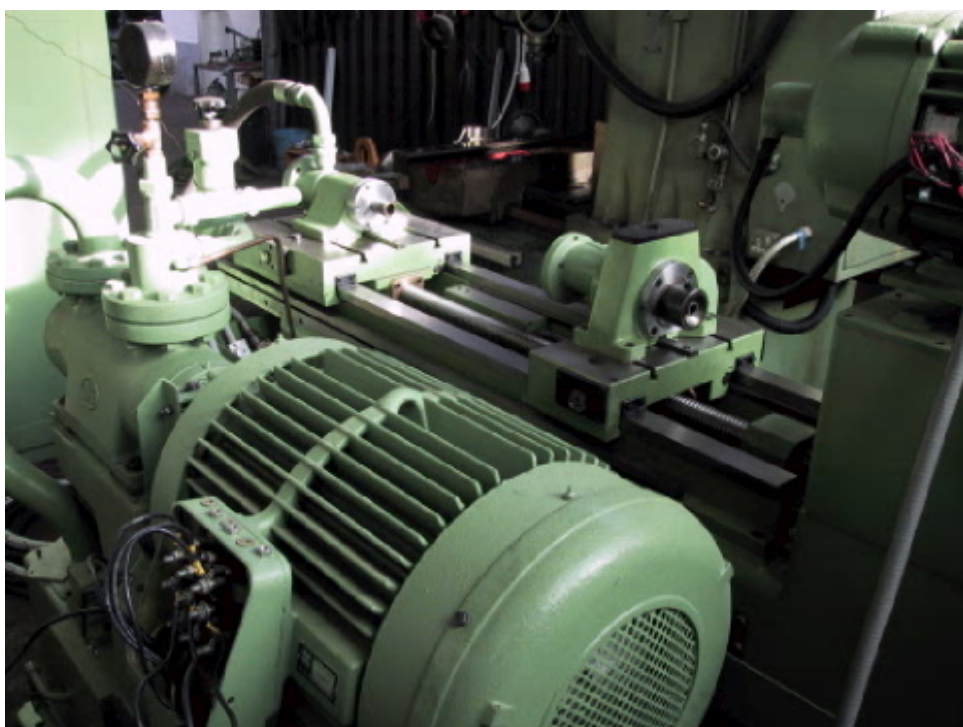
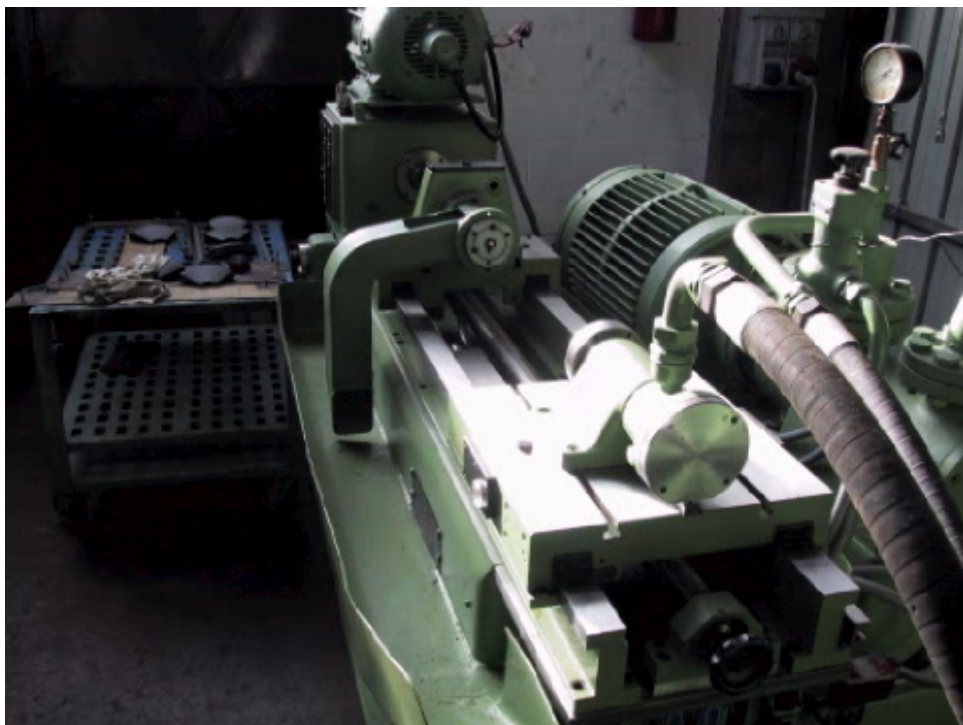
Via Artigiani, 32 - 25063

Gardone V.T. Brescia - Italia

Warehouse 2

Via Caduti del lavoro 41, 25030

Coccaglio Brescia - Italia



Gamba Macchine Srl

V.A.T. IT00639540988

C.F./R.I. 01581570171

REA 248813 BS

C.S. 802.165,00 €

Contacts

+39 030 831096

+39 030 8913312

offerte@gambamacchine.it

Where we are

Headquarter and Warehouse 1

Via Artigiani, 32 - 25063

Gardone V.T. Brescia - Italia

Warehouse 2

Via Caduti del lavoro 41, 25030

Coccaglio Brescia - Italia