

## SIG B16

**Category** Drilling machine

**Type** Deep-hole drilling

**Made** SIG

**Model** B16



### Gamba Macchine Srl

V.A.T. IT00639540988

C.F./R.I. 01581570171

REA 248813 BS

C.S. 802.165,00 €

### Contacts

+39 030 831096

+39 030 8913312

offerte@gambamacchine.it

### Where we are

#### Headquarter and Warehouse 1

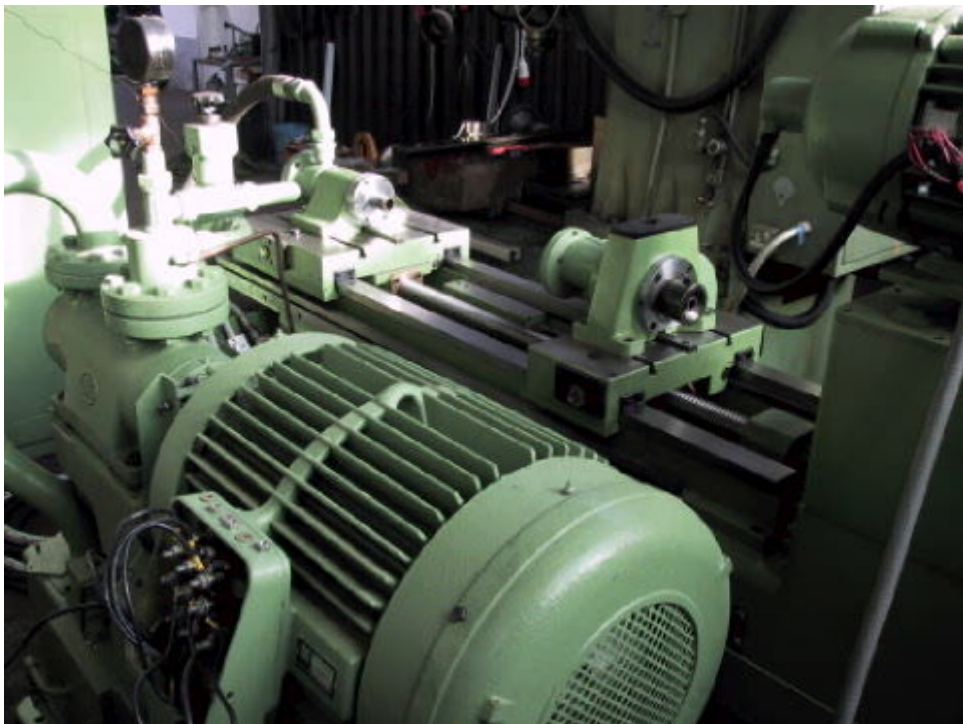
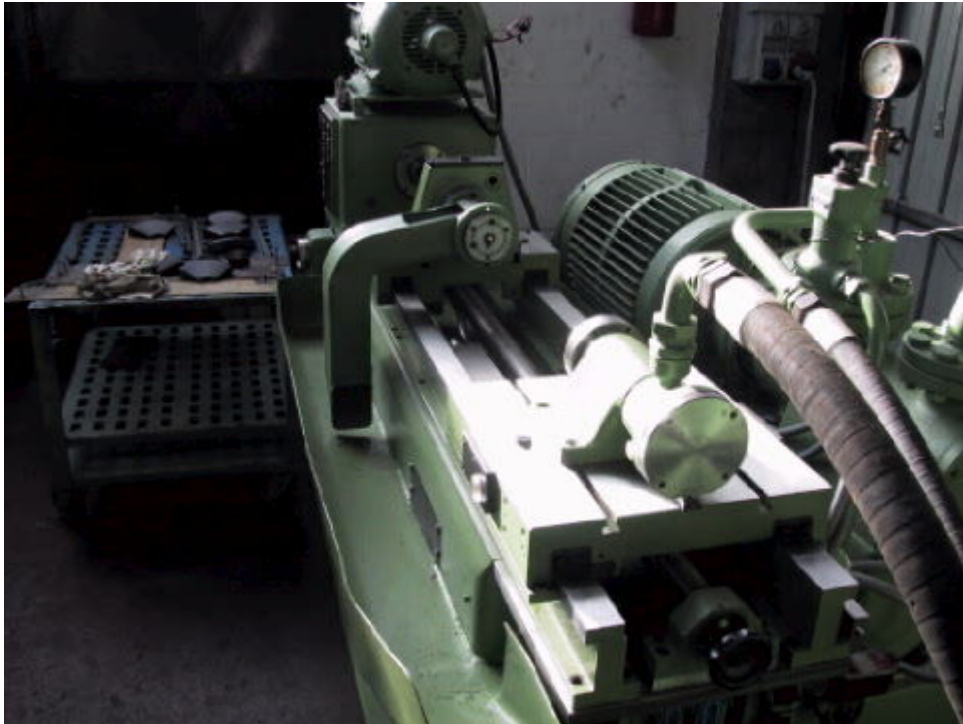
Via Artigiani, 32 - 25063

Gardone V.T. Brescia - Italia

#### Warehouse 2

Via Caduti del lavoro 41, 25030

Coccaglio Brescia - Italia



**Gamba Macchine Srl**

**V.A.T.** IT00639540988

**C.F./R.I.** 01581570171

**REA** 248813 BS

**C.S.** 802.165,00 €

**Contacts**

+39 030 831096

+39 030 8913312

[offerte@gambamacchine.it](mailto:offerte@gambamacchine.it)

**Where we are**

**Headquarter and Warehouse 1**

Via Artigiani, 32 - 25063

Gardone V.T. Brescia - Italia

**Warehouse 2**

Via Caduti del lavoro 41, 25030

Coccaglio Brescia - Italia